

2017

GIPPSLAND

black pages

A directory of Indigenous services and support in Gippsland



Traditional Owners

Gippsland Primary Health Network (PHN) respectfully acknowledges the traditional owners and custodians of the land.

Gippsland PHN pays its respects to their Elders past and present.

Contents

Health Services

Aboriginal Community Controlled Health Organisations (ACCHOs)	2
Aboriginal Medical Services	5
Alcohol, Tobacco and Other Drug Services	7
Allied Health Services	9
Chronic Disease Management & Services	13
Dental Services	14
Disability Services	15
Hospitals	16
Doctors clinics	18
Palliative and End-of-life Care	24
Medication and Pharmacy	25

Community Support Services

Aboriginal Liaison Services	28
Disability Services	29
Elders Services	30
Gamblers Help Services	31
Local Aboriginal Networks	31
Gathering Spaces	32
Home and Community Care Services (HACC)	33
Housing Services	35
Family & Domestic Violence Services	37

Men's & Women's Services

Men's Services	42
Women's Services	43

Children's Services

Childcare & Kindergarten	46
Children's Services	46
Child Safety and Protection Services	47
Maternal and Child Health Services	49

Mental Health

Mental Health Services	54
------------------------	----

Employment & Education

Education Services	60
Employment Services	62

Additional Information

Traditional Owners	66
Arts and Culture	66
Identity Services	67
Sporting Services	68
Aboriginal Legal and Justice Services	70
Transport Services	73
Additional Support & Community Information	74



Introduction

Aim of the Resource

This document aims to provide information about Indigenous services across Gippsland. This edition also includes mainstream health and community services to encourage community members to utilise these services, to promote self-empowerment and choice in regards to health and the health of others. This directory is also available electronically via the Gippsland PHN website, www.gphn.org.au

It is hoped the Gippsland Black Pages Service Directory will be widely used and shared between all service providers to assist with targeted and culturally sensitive care. It also serves as a starting point for the development of relationships between organisations, which we hope will lead to information exchange, transfer of knowledge, further discussions and a greater understanding around Aboriginal health outcomes.

In many instances throughout this directory the terms Indigenous, Aboriginal and Koori/Koorie are used. This is largely dependent on the individual organisations. In most instances these terms refer to both Aboriginal and Torres Strait Islander peoples.

This is the fourth revision of this directory, which was originally developed in collaboration with Indigenous professionals and community members in 2011.

Acknowledgement of Support

The Gippsland Black Pages Service Directory has been made possible by Gippsland PHN through the support of the Commonwealth Department of Health, Indigenous Australians Health Program.

Language

Gippsland PHN would like to acknowledge and thank Dr Doris Paton for her contribution of GunaiKurnai language to the Gippsland Black Pages. Dr Paton is a Gunai/Ngarigo Monero woman who has worked with the Victorian Aboriginal Corporation for Languages (VACL) for 22 years, specialising in Gunai language and Aboriginal education curriculum.

Photographs and Artwork

The cover image was kindly provided by Myles Bennell Photography, www.mylesbennellphotography.com

Photographs: Images captured throughout Gippsland at public events kindly provided by Deadly Sport Gippsland, www.deadlysport.com.au

Artwork: With thanks to the children of Lake Tyers Health and Children's Services, Nowa Nowa Kindergarten, and Nowa Nowa Primary School.

General Information

Gippsland PHN would like to thank all of the contributors and organisations that have participated in the development of this directory and acknowledge the work being done to close the health gap throughout Gippsland.

Disclaimer

Gippsland PHN has made every effort to confirm and update service information at time of printing. It is suggested that individual users of this directory confirm details with specific organisations prior to attendance. Programs listed in this directory may be subject to funding. For changes to this directory please contact Gippsland PHN, info@gphn.org.au

Health Services

*Yangan Warban Wrak (yan-gan war-ban wraak)
Place to go to ask for something.*

ABORIGINAL COMMUNITY CONTROLLED HEALTH ORGANISATIONS (ACCHOS)

Aboriginal Community Controlled Health Organisations are key stakeholders in Aboriginal health and provide health and community services to Aboriginal communities across Australia. Aboriginal Cooperatives also provide a meeting point for Aboriginal people locally and visitors to the region as well as providing valuable information about:

- Health information and services
- Cultural awareness
- Local Aboriginal issues
- Local landmarks and sacred sites
- Deaths in the community
- Funeral dates and times
- Confirmation of Aboriginality
- Referrals to Aboriginal services and mainstream health services.



Gippsland & East Gippsland Aboriginal Co-Operative (GEGAC)

GEGAC offers primary health and community services in Bairnsdale and Morwell. GEGAC also provides a home for the Krowathunkooloong Keeping Place in Bairnsdale, which offers cultural awareness and historical services. GEGAC offers:

- Cultural business
- Community services
- Primary health care
- Children, youth and family services.

Medical and Primary Health:
37-53 Dalmahoy Street
Bairnsdale 3875
PO Box 634
Phone: 03 5150 0760
Fax: 03 5152 3115
Email: enquiries@gegac.org.au
www.gegac.org.au

Children, Youth and Family Services:
3/107 Nicholson Street
Bairnsdale 3875
PO Box 634
Phone: 03 5150 0712
Fax: 03 5152 3115
Email: cypsreception@gegac.org.au
www.gegac.org.au

Morwell House:
9 Maryvale Crescent
Morwell 3840
Phone: 03 5134 3816
Fax: 03 5152 3115
www.gegac.org.au

Lake Tyers Health and Children's Services (LTHCS)

Lake Tyers Health and Children's Services provides a wide range of high-quality holistic health services free of charge by a dedicated team of qualified and experienced professionals and health workers. LTHCS offers ongoing preventive health screening, treatments for chronic conditions and diseases and

gives opportunities for the committed staff to educate clients with the knowledge and information they need to better manage their own health. Services include:

- Alcohol and drug counselling and referrals
- Diabetes education
- Elders group
- General practitioner
- Hearing services
- Home and Community Care Services (HACC)
- Immunisation
- Maternal and child health
- Medication and Webster pack delivery
- Men's health
- Mental health
- Midwife
- Needle syringe program
- Nursing home, school and childcare visits
- Pathology
- Physiotherapy
- Podiatry
- Social and emotional counselling and referral
- Women's health.

1 Rules Road
Lake Tyers 3887
PO Box 429
Lakes Entrance 3909
Phone: 03 5155 8500
Fax: 03 5156 5791
Email: lthcsrec@lthcs.org.au

Lakes Entrance Aboriginal Health Association (LEAHA)

LEAHA is the Aboriginal Community Controlled Health Organisation based in Lakes Entrance.

LEAHA aims to improve the health and wellbeing of the Aboriginal peoples within the community and around Lakes Entrance, Lake Tyers beach, Lake Bunga, Swan Reach, Tambo Upper, Metung and surrounding areas. LEAHA provides services to the Lakes Entrance Aboriginal community, including:

- Chronic care program
- AHW/Nurse team home visits

- GP service Wednesday mornings
- Medical transport program from Monday to Thursday
- Primary Care Network Chronic Care Services
- Local Justice Worker Program
- Koori Youth Justice Program
- Elders Community Connection Program
- Gippsland Tobacco Healthy Lifestyle team
- Diabetes and respiratory education
- Visiting hearing services
- Visiting optometry
- Visiting podiatry
- Men's Health Promotion Program
- Parenting HUB program
- Outreach midwife service from GEGAC
- Social and emotional counselling/referral
- Women's health
- Mental health.

**18-26 Jemmeson Street
Lakes Entrance 3909
PO Box 429
Phone: 03 5155 8465
Fax: 03 5155 8475
Email: contact@leaha.org.au**

Ramahyuck District Aboriginal Corporation (RDAC)

Ramahyuck delivers a range of health and community development services to the Indigenous and wider community across Gippsland. Through its health clinics in Sale, Morwell and Drouin, and also in collaboration with partners across the greater Gippsland region, Ramahyuck delivers programs aimed at:

- Providing comprehensive primary health care along with chronic disease management
- Ensuring a holistic approach to health through social and emotional wellbeing programs
- Implementing innovative community enterprise and engagement initiatives.

Ramahyuck has a proud history and acknowledges its founding members who had the foresight and vision to recognise

community needs and advocate for the establishment of the organisation to advance the health and wellbeing of Indigenous people in the region.

**Sale: Head Office
117 Foster Street
PO Box 1240
Sale 3850
Phone: 03 5143 1644
www.ramahyuck.org**

**Morwell:
15/17 Collins Street
Morwell 3840
Phone: 03 5136 5100
Fax: 03 5136 5155**

**Drouin:
25 Young Street
Drouin 3818
Phone: 03 5625 6500
Fax: 03 5625 6555**

**Wonthaggi:
64 Watt Street
Wonthaggi 3995
Phone: 03 5672 1444**

Moogji Aboriginal Council East Gippsland Inc. (Moogji)

Moogji is an Aboriginal Community Controlled Organisation that provides services to the East Gippsland community specifically in and around Orbost, Cann River and surrounding districts. Services include:

- Doctors' clinic, GP visiting from Orbost Medical Clinic
- Aboriginal Health Workers
- Medical transport as far as Melbourne
- Clinical nurse
- Youth worker
- An environmental team
- Counsellors
- A visiting psychiatrist
- Community kitchens and gardens
- Assess to scheduled dental appointments and transport to the dental clinics and Gippsland and East Gippsland Aboriginal

- Cooperative (Bairnsdale) and Orbost Regional Health
- A visiting optometrist
- Child and women's health check days and health promotion events in partnership with Orbost Regional Health and Djillay Ngalu.

**52 Stanley Street
Orbost 3888
Phone: 03 5154 2133
Fax: 03 5154 2120
Email: reception@moogji.com.au**

Djillay Ngalu

Djillay Ngalu is a consortium of the four East Gippsland Aboriginal Community Controlled Health Organisations (ACCHOs) from Bairnsdale through to Orbost.

Its primary objective is to improve the health outcomes of the East Gippsland Aboriginal community. It aims to enhance the capacity of ACCHOs and the prime focus of its work is to further develop

and support the Aboriginal and Torres Strait Islander health workforce. Djillay Ngalu facilitates training programs and workshops covering a wide range of topics, including cultural awareness, corporate governance, first aid and cyber safety, to name just a few.

A prominent component of Djillay Ngalu is its Physical Activity and Wellbeing Program, which promotes and supports increased participation in sport and recreation across the region for all age groups. Leadership camps, surfing events and canoeing activities are part of this program.

**347A Esplanade
Lakes Entrance 3909
Phone: 03 5155 1051
Email: admin@dn.org.au
www.facebook.com/djillayngalu
www.dn.org.au**

ABORIGINAL MEDICAL SERVICES

- yangan muraty wrak- (yan-gan mu-ra-tea wraak) go to place for sickness.

Gippsland & East Gippsland Aboriginal Co-Operative (GEGAC)

GEGAC provides an Aboriginal Medical Service to the community in East Gippsland from Monday to Friday, 9.00 am to 5.00 pm.

Medical appointments and appointments for all allied health services are made by calling the medical reception. Nursing staff are available for all medical needs with no appointment necessary.

Nurses also provide: pathology, wound dressings, social and emotional support, general medical needs, home visits,

chronic disease management and immunisations.

Aboriginal Health Workers provide transport to medical appointments, health screening and health promotion.

**37-53 Dalmahoy Street
Bairnsdale 3875
Phone: 03 5150 0760
Email: enquiries@gegac.org.au**

Lake Tyers Health and Children's Services (LTHCS)

LTHCS offers medical services to the community across East Gippsland and specifically in the Lake Tyers area. To make an appointment please call the medical staff.

**1 Rules Road,
Lake Tyers 3887
PO Box 429
Lakes Entrance 3909
Phone: 03 5155 8500
Fax: 03 5156 5791
Email: lthcsrec@lthcs.org.au**

Lakes Entrance Aboriginal Health Association (LEAHA)

LEAHA offers medical services to the Lakes Entrance community.

**18-26 Jemmeson Street
Lakes Entrance 3909
PO Box 429
Phone: 03 5155 8465
Fax: 03 5155 8475
Email: contact@leaha.org.au**

Moogji Aboriginal Council

The health clinic provides services to Aboriginal people in East Gippsland. The GP clinic operates on Tuesdays and a clinic nurse is available on Tuesdays and Thursdays for consultation.

**52 Stanley Street
Orbost 3888
Phone: 03 5154 2133
Email: reception@moogji.com.au**

Nurse-on-Call - 1300 60 60 24 (free call)

NURSE-ON-CALL is a phone service that provides immediate, expert health advice from a registered nurse, 24 hours a day, seven days a week. If you think your situation is an emergency, you should always call 000 or go to an emergency department at a hospital. Call 1300 60 60 24 for the cost of a local call from anywhere in Victoria for health advice 24 hours a day (calls from mobile phones may be charged at a higher rate).

Ramahyuck District Aboriginal Corporation (RDAC)

RDAC provides a range of health services to the Aboriginal communities of Latrobe, Baw Baw, South Gippsland, Bass Coast and Wellington shires.

Sale:

Ramahyuck Gippsland Family Medical
**117 Foster Street
Sale 3850
PO Box 1240
Phone: 03 5143 1644
Fax: 03 5144 6172**

Morwell:

Central Gippsland Aboriginal Health Service (Nindedana Quaranook)
**15/17 Buckley Street
Morwell 3840
PO Box 250
Phone: 03 5136 5128
Fax: 03 5136 5155**

Drouin:

West Gippsland Aboriginal Health Service
**25 Young Street
Drouin 3818
Phone: 03 5625 6500**

ALCOHOL, TOBACCO AND OTHER DRUG SERVICES

- nobler, noorunindyuk, wrak (nob-ler, noo-run-in-dyuk wraak) alcohol, tobacco, place.

ACSO (Australian Community Support Organisation)

ACSO provides intake, assessment and referral to treatment for people experiencing alcohol and drug issues in regional Victoria (including Gippsland). It provides either face-to-face or phone appointments depending on what is most suited to you.

It can assist people experiencing issues arising from their use of alcohol or drugs that could place themselves or others at risk of harm and who have not found sufficient help from other healthcare providers.

It conducts an assessment to find out more about people's needs in order to help them access the most appropriate services. ACSO is committed to providing culturally appropriate services.

**ACSO Gippsland
3/35 Grey Street
Traralgon 3844
Phone: 03 5172 2900
Statewide: 1300 022 760
www.asco.org.au**

headspace

headspace provides support and counselling to young Aboriginal and non-Aboriginal people aged 12-25 years who are experiencing issues with drug and alcohol misuse.

**Corner of Hazelwood Road and George Street
Morwell 3840
Phone: 03 5136 8300
Email: info@headspacemorwell.org.au
www.headspace.org.au**

Lake Tyers Health and Children's Services (LTHCS)

LTHCS provides drug and alcohol counselling and referral for the Lake Tyers community.

It provides confidential access to injecting equipment and information regarding safe injecting.

**1 Rules Road
Lake Tyers 3887
PO Box 429
Lakes Entrance 3909
Phone: 03 5155 8500
Fax: 03 5156 5791
Email: lthcsrec@lthcs.org.au**

Latrobe Community Health Service (LCHS)

Latrobe Community Health Service has a range of alcohol and other drug services for Aboriginal and Torres Strait Islander peoples throughout Gippsland. These include care and recovery coordination, counselling, non-residential withdrawal and planning.

**Free call: 1800 242 696
www.lchs.com.au**

Gippsland & East Gippsland Aboriginal Co-Operative (GEGAC)

GEGAC's Alcohol and Drug Services provide case management, support and counselling for Aboriginal people with alcohol and drug issues in Latrobe, Baw Baw and East Gippsland catchment areas.

Linkages programs provide assistance with connections to agencies and programs

to provide the necessary help needed to access service treatments. Some service agencies GEGAC is linked with are Ngwala, LCHS, Ramahyuck, Anglicare, Koorie Courts, Justice and DHHS.

Alcohol and drug workers provide assessment, support, counselling and referral for Aboriginal people with alcohol and drug issues. These referrals can lead to rehabilitation and treatment programs and accommodation and support in public and private housing sectors.

Alcohol and drug nurses (Bairnsdale) provide health assessments and withdrawal support for Aboriginal people with alcohol and drug issues.

Koori Youth on the Move program provides young local community members with the opportunity to attend group activities, outings and educational sessions in a safe, welcoming and culturally appropriate environment.

Tanderra Alcohol & Drug Services
372 Main Street
Bairnsdale 3875
Phone: 03 5153 0125
Email: enquiries@gegac.org.au

Morwell's GEGAC office provides alcohol and drug counselling and support for Aboriginal clients with AOD issues. An Indigenous community links program provides an assessment and referral service for Aboriginal clients from Baw Baw and Latrobe shires.

9 Maryvale Crescent
Morwell 3840
Phone: 03 5133 9276
www.gegac.org.au

Quitline

Quitline provides tailored and culturally appropriate support from four Aboriginal Quitline counsellors.

Phone: 137 848
www.quit.org.au

Moogji Aboriginal Council

Moogji offers counselling services and referral services to the Orbost and district community.

52 Stanley Street
Orbost 3888
Phone: 03 5154 2133
Email: reception@moogji.com.au

Ramahyuck District Aboriginal Corporation

A drug and alcohol worker provides drug and alcohol counselling and referral from all sites across Gippsland. Tobacco action workers develop initiatives to shift community attitudes towards smoking, to encourage quit attempts, and to support quitting through brief interventions.

Phone: 03 5144 6511

Sale
Phone: 03 5143 1644

Morwell
Phone: 03 5136 5100

Drouin
Phone: 03 5625 6500

Youth Support and Advocacy Service (YSAS)

YSAS provides a range of Indigenous youth-specific services including drug and alcohol outreach, treatment, withdrawal, rehabilitation and support programs. The central office is located in Morwell and provides services to Latrobe City (Morwell, Traralgon, Moe, Churchill and outlying areas), Shire of Wellington (Sale and outlying areas), Mirboo North (South Gippsland), and part of the Shire of Baw Baw (as far as Drouin).

4 Tarwin Street
Morwell 3840
Phone: 03 5133 3411
Free call: 1800 458 685
www.ysas.org.au

Lakes Entrance Aboriginal Health Association (LEAHA)

LEAHA offers support through referral to Tanderra in Bairnsdale. It also runs the Gippsland Tobacco Program to support community members while quitting tobacco.

18-26 Jemmeson Street
Lakes Entrance 3909
PO Box 429
Phone: 03 5155 8465
Fax: 03 5155 8475
Email: contact@leaha.org.au

1800 ICE ADVICE

For users, families and health professionals. 24 hours a day, seven days per week.

Phone: 1800 423 238

Family Drug Support Australia

Support Line available 24 hours, seven days a week.

Free call: 1300 368 186
www.fds.org.au

Family Drug Help (FDH)

FDH provides a specialist service to support family members and friends who are concerned about a loved one's alcohol and other drug use. FDH aims to strengthen clients' physical and mental health and their ability to cope with a very difficult situation.

Free call: 1300 651 068
www.sharc.org.au/program/family-drug-help

ALLIED HEALTH SERVICES

- yoo-djillay wrak (you-jillay- wraak)
Other places to go when unhealthy.

'Allied health' is a term used to describe the broad range of health professionals who are not doctors, dentists or nurses. Allied health professionals aim to prevent, diagnose and treat a range of conditions and illnesses and often work within multi-skilled health teams to provide the best patient outcomes.

Gippsland & East Gippsland Aboriginal Co-Operative (GEGAC)

GEGAC provides allied health services to the East Gippsland Aboriginal community through its chronic disease clinics, which include: podiatry, diabetes education for people at risk, diabetes education, diabetes clinic, physiotherapy and dietitian (including outreach to Lake Tyers).

Phone: 03 5150 0700
Email: enquiries@gegac.org.au

Lakes Entrance Aboriginal Health Association (LEAHA)

The Chronic Disease Management Clinic at LEAHA provides additional and specific health services and support to all members of the Lakes Entrance Aboriginal community. The clinic focuses on chronic disease prevention and management, and acknowledges the spiritual and cultural wellbeing of Aboriginal people, not just physical problems.

18-26 Jemmeson Street
Lakes Entrance 3909
PO Box 429
Phone: 03 5155 8465
Fax: 03 5155 8475
Email: contact@leaha.org.au

Lake Tyers Health and Children's Services (LTHCS)

LTHCS provides optometry, hearing services, physiotherapy, dietetics, exercise physiology, occupational therapy and podiatry for the community at Lake Tyers. Contact Lake Tyers for times.

Phone: 03 5155 8500
Email: lthcsrec@lthcs.org.au

Moogji Aboriginal Council

Moogji offers optometry and audiology services with transport available for community members.

52 Stanley Street
Orbost 3888
Phone: 03 5154 2133
Email: reception@moogji.com.au

Victorian Eye and Ear Surgical Program

The aim of the program is to increase access to ear and eye surgical services for Aboriginal and Torres Strait Islander people, with priority given to those living in regional and remote areas of Victoria. The program enables Aboriginal and Torres Strait Islander people with diagnosed eye and ear conditions who have been placed on a waiting list for specialist consultation and/or treatment to have timely access to these services. Referral is required.

Rural Workforce Agency Victoria
Level 6, Tower 4, 18-38 Siddeley Street
Melbourne 3005
Phone: 03 9349 7800

Ramahyuck District Aboriginal Corporation

The Sale site offers optometry, free audiology services, podiatry and physiotherapy. Transport can be arranged for community members. Please contact your local site for more details.

Phone: 03 5144 6511
Morwell offers audiology services.

Phone: 03 5136 5100

Drouin offers a range of allied health services. Please contact for more information.

Victorian Eye Care Service; Spectacle Subsidy Scheme for Aboriginal Victorians

The Victorian Government funds the Australian College of Optometry to implement the Spectacle Subsidy Scheme for Aboriginal Victorians. The scheme allows patients to access specifically designed frames along with the prescribed lens for a \$10 contribution. Call for an application form.

Phone: 03 9349 7434
www.health.vic.gov.au

Subsidised spectacle providers:

Bairnsdale
Eyecare Plus Bairnsdale
29 Service Street, Bairnsdale 3875
Phone: 03 5152 4380

Lakes Entrance
East Gippsland Optical
363 Esplanade, Lakes Entrance 3909
Phone: 03 5155 2899

Lang Lang
Lang Lang Eyecare
31 Westernport Road, Lang Lang 3984
Phone: 03 5997 5525

Moe
Moe Optical
Shop 5, Moe Plaza, Moore Street, Moe 3825
Phone: 03 5127 1545

Morwell
Latrobe Eyecare
13 George Street, Morwell 3840
Phone: 03 5134 2555

Orbost
Eyecare Plus
17 Mcleod Street, Orbost 3888
Phone: 03 5152 4380

Wonthaggi
Akers Eyewear
19 Murray Street, Wonthaggi 3995
Phone: 03 5672 1965

Australian Hearing

Adult services – provides hearing assessments and rehabilitation services, including full subsidised (free) hearing aids for adults with a hearing loss. To arrange an appointment, please contact Australian Hearing or your local Aboriginal Medical Service agency.

Children and Young Adult services – provides hearing services to people aged up to 26 years of age. Tell your local health centre if you are concerned about your child's ear health or hearing. Contact Australian Hearing for more information.

18 Tarwin Street, Morwell 3984
Phone: 03 5135 1200
www.hearing.com.au

Bass Coast Health (BCH)

Various services are available across the Bass Coast region including Cowes, Wonthaggi, Grantville and San Remo. Services available include dietetics, occupational therapy, orthotics, physiotherapy, podiatry, social work and speech pathology. Please check with reception regarding your specific requirements and location.

Phone: 03 5671 3333
www.bcrh.com.au

Bairnsdale Regional Health Service (BRHS)

The BRHS Allied Health team provides supplementary healthcare services to the East Gippsland community for both inpatients and outpatients. Its services are available to all community members and are accessible by GP referral or self-referral in some cases. Services available include dietetics, equipment services, occupational therapy, physiotherapy, podiatry, speech pathology and lymphedema specialists.

Phone: 03 5150 3388
www.brhs.com.au

Central Gippsland Health Service (CGHS)

The Division of Community Services and Allied Health operates from various sites across the Shire of Wellington, including Sale, Maffra, Rosedale and Loch Sport. Many services are provided in the home. Additionally, a range of community venues are utilised to enhance service access for the community. Services include physiotherapy, occupational therapy, speech pathology, dietetics and social work.

Phone: 03 5143 8560
www.wcghs.com.au

Gippsland Lakes Community Health Service (GLCHS)

Allied health services include art therapy, dietetics, chronic pain management, exercise physiology, hand therapy, gym and exercise programs, physiotherapy, podiatry, speech pathology and occupational therapy.

Phone: 03 5155 8300
www.glch.org.au

Gippsland Southern Health Service (GSHS)

The Community Allied Health Team (CAHT) aims to help people with health issues to stay in their own home where it is possible and practical. The team provides services that would otherwise be unavailable to people due to their disability, frailty, rural isolation, financial or other difficulty. Services are offered to the elderly, people with a disability and carers of these people. Services include dietetics, physiotherapy, podiatry, speech pathology and occupational therapy.

Phone: 03 5667 5555 (Leongatha)
Phone: 03 5654 2777 (Korumburra)
www.gshs.com.au

Latrobe Community Health Service (LCHS)

Whether it is a one-off visit to the doctor or intensive physiotherapy sessions, Latrobe Community Health Service can help. It also offers a range of nursing services, counselling and psychology services, nutrition advice, occupational therapy and podiatry. LCHS has offices across Gippsland from Warragul to Bairnsdale.

Phone: 1800 242 696
www.lchs.com.au

Latrobe Regional Hospital (LRH)

Latrobe Regional Hospital offers a comprehensive suite of services to people recovering from surgery, injuries and serious illnesses. Services include a hydrotherapy pool, prosthetics and orthotics, social work, dietetics, occupational therapy, speech pathology and physiotherapy.

Phone: 03 5173 8383
www.lrh.com.au

Orbost Regional Health (ORH)

ORH is proud that its innovative multi-purpose service has the capacity, through its flexible funding, to embrace a holistic approach to health and wellbeing. Allied health services available include dietetics, occupational therapy, speech pathology, rehabilitation programs and physiotherapy.

Phone: 03 5154 6637
www.orbostregionalhealth.com.au

Vision Australia Gippsland

Vision Australia supports people who are blind or have low vision to live the life they choose. Culturally competent service.

2A Mouritz Street
Warragul 3820
PO Box 726
Phone: 03 5623 0100
www.visionaustralia.org

West Gippsland Healthcare Group (WGHG)

WGHG has an allied health department that includes a community rehabilitation centre, occupational therapy, physiotherapy, speech therapy, dietetics and social work. WGHG has Aboriginal allied health assistants as part of its team at the hospital. The rural allied health services are delivered by the community services team based in Warragul. This team includes all of the above plus a HACC counsellor and podiatrist.

Phone: 03 5624 3500
www.wghg.com.au

CHRONIC DISEASE MANAGEMENT & SERVICES

- woolartbe muraty wrak (wool-lart-be mu-ra-tea wraak) take care of sickness place.

Gippsland & East Gippsland Aboriginal Co-Operative (GEGAC)

Diabetes education/diabetes clinic provide information and support for people with diabetes and those at risk of developing diabetes. Podiatry services are available to diabetic and general clients once a month. A dietitian is available for individual appointments and health promotion activities. The services outreach to Lake Tyers. Physiotherapy services are available once a month.

Phone: 03 5150 0700
Email: enquiries@gegac.org.au

Lakes Entrance Aboriginal Health Association (LEAHA)

LEAHA provides diabetes education and a chronic disease nurse for the community of Lakes Entrance.

18-26 Jemmeson Street
Lakes Entrance 3909
PO Box 429
Phone: 03 5155 8465
Fax: 03 5155 8475
Email: contact@leaha.org.au

Lake Tyers Health and Children's Services (LTHCS)

LTHCS provides diabetes education and chronic disease nurses for the community at Lake Tyers.

Phone: 03 5155 8500

Ramahyuck District Aboriginal Corporation (RDAC)

In conjunction with West Gippsland Healthcare Group, RDAC provides: cardio pulmonary rehabilitation, continence advisory services and dietetics. They also offer chronic health prevention workers at all sites across Gippsland.

Phone: 03 5143 1644

West Gippsland Healthcare Group

Diabetes Educators

Diabetes educators work out of Warragul Hospital, Community Services and also provide outreach services in Drouin.

Warragul Hospital
Landsborough Street
Warragul 3820
Phone: 03 5623 0611
www.wghg.com.au

West Gippsland Community Services
31-35 Gladstone Street
Warragul 3820
Phone: 03 5624 3500

Ramahyuck Drouin
33 Young Street
Drouin 3818
Phone: 03 5625 6500

DENTAL SERVICES

- nerndack wraak - teeth place

Gippsland & East Gippsland Aboriginal Co-Operative (GEGAC)

Aboriginal Dental Program

A dentist provides general dental services for the Aboriginal community of East Gippsland as well as partners and parents of Aboriginal people.

A dental therapist provides basic dentistry e.g. fillings, taking out baby teeth, taking x-rays, teaching kids and young adults how to clean teeth properly and how to manage a healthy mouth to clients up to 25 years of age.

An oral therapist who is specially trained to clean teeth and care for gums can also provide basic dentistry and is able to treat patients of any age.

Phone: 03 5150 0760
Email: enquiries@gegac.org.au

Latrobe Community Health Service (LCHS)

Koorie Dental Service

The Koorie Dental Service provides dental services for eligible Koorie clients.

The service is free for those with a current healthcare/concession card. There is no waiting list for individuals with a current healthcare/concession card.

Phone: 03 5127 9189
Free call: 1800 242 696

Ramahyuck District Aboriginal Co-Operative

Ramahyuck Gippsland Dental Clinic

Dental services are free for healthcare card holders. Non healthcare card holders will be charged a fee.

Transport can be provided. An appointment is required.

111 Foster Street
Sale 3850
Phone: 03 5144 1644

The Royal Dental Hospital of Melbourne (RDHM)

RDHM offers free emergency and general dental care treatment, including false teeth, even if you do not have a healthcare card or pensioner concession card. There are no waiting lists for Aboriginal or Torres Strait Islander patients. We will offer you an appointment as soon as possible. You can request time with our Aboriginal Liaison Officer for a chat or if you and your family require ongoing support throughout your course of dental treatment. Our Aboriginal Liaison Officer is onsite at RDHM on Wednesday, Thursday and Friday each week.

720 Swanston Street
Carlton 3053
Phone: 03 9341 1000 or 1800 833 039

DISABILITY SERVICES

UnitingCare Gippsland

UnitingCare Gippsland provides services to people living with a disability. This includes disability employment, supported accommodation, therapeutic support, case management, consumer direct care, advocacy programs and community living support.

49 McCulloch Street
Bairnsdale 3875
Phone: 03 5152 9600
www.ucgipps.org.au

Interchange Gippsland

Interchange Gippsland provides innovative and flexible support to people with disabilities and their families. The service area covers the local government areas of Latrobe City, Baw Baw Shire, South Gippsland Shire and Bass Coast Shire. Interchange Gippsland offers limited specialist services in Wellington and East Gippsland shires. Programs all provide an opportunity for families to have a regular planned break, have new meaningful social and life experiences, and increase community participation for people with disabilities.

66 Commercial Road
Morwell 3840
Phone: 1300 736 765
www.lcg.asn.au

Carer Gateway

Carer Gateway is a national online and phone service that provides practical information and resources to support carers. The interactive service finder helps carers connect to local support services.

Phone: 1800 422 737
www.carergateway.gov.au

Gippsland Disability Advocacy Inc.

GDA supports and defends the rights and interests of people with disabilities, encourages and promotes participation by people with disabilities in the activities of the wider community and promotes awareness of the benefits of inclusive communities.

This is achieved by providing individual advocacy support for people with disabilities (on a priority needs basis), advice and support. Every effort is made to link people in to other supports where we are unable to help. GDA supports self-advocacy locally and regionally and provides an office and meeting room for New Wave Self Advocacy.

Suite 2, first floor, 6-8 Grey Street
Traralgon 3844
Phone: 03 5175 0444
Email: adminstration@gdai.org.au
www.gdai.com.au

EW Tipping Foundation

If you are an adult with an intellectual disability in Gippsland, you can develop new skills with this local program of diverse, exciting and instructive daytime courses. You can develop positive friendships, engage in a range of functional activities, be active within your community, gain greater independence and learn something really useful.

58-60 Commercial Road
Morwell 3840
Phone: 03 5135 4300

68a Macleod Street
Bairnsdale 3875
Phone: 03 5152 7680
www.tipping.org.au

HOSPITALS

- wurnalla budjeri wrak (wurn-nalla bud-gerry wraak) to get well place.

Bairnsdale Regional Health Service (BRHS)

As the largest healthcare provider in East Gippsland, BRHS provides services including: comprehensive primary care, acute care, aged care, and community and home-based health services.

Koori Liaison Officer

The Koori Liaison Officer ensures that Aboriginal people attending BRHS have support from an Aboriginal worker to provide best possible outcomes for their stay.

**37-53 Dalmahoy Street
Bairnsdale 3875
Phone: 03 5150 0760**

**122 Day Street
Bairnsdale 3875
Phone: 03 5150 3333
www.brhs.com.au**

Bass Coast Health

Bass Coast Health (BCH) is the major public healthcare provider within the Bass Coast Shire in South Gippsland. It is an integrated health service providing a range of acute, sub-acute, ancillary medical, aged and ambulatory care services. BCH is fully accredited by the Australian Council on Health Care Standards (ACHS) and is equipped to offer a broad range of specialist medical, surgical and obstetric services including orthopaedics, ophthalmology, gynaecology, paediatrics, urology and rehabilitation.

**235 Graham Street
Wonthaggi 3995
Phone: 03 5671 3333
www.bcrh.com.au**

Central Gippsland Health Service (CGHS)

CGHS is the major provider of health services and residential aged care services in Wellington Shire. It provides: 70 acute beds; close to 180 high and low care residential aged care beds; and 15 independent living units. Its acute services include a 24-hour, seven days a week emergency department, operating theatres, day procedure unit, and oncology and dialysis services.

Koori Liaison Officer

Provides support to Aboriginal patients.

**Sale Hospital
Guthridge Parade, Sale 3840
Phone: 03 5143 8600
www.cghs.com.au**

Gippsland Southern Health Service

Based at Leongatha and Korumburra and servicing the wider area of the South Gippsland Shire, Gippsland Southern Health Service (GSHS) offers a broad range of acute, residential and primary health services.

**66 Koonawarra Road
Leongatha 3953
Phone: 03 5667 5555**

**6-8 Gordon Street
Korumburra 3950
Phone: 03 5654 2777
www.gshs.com.au**

Heyfield Hospital (CGHS)

The Heyfield Hospital has nine acute and sub-acute beds, as well as the 51-bed aged care facility Laurina Lodge. The hospital and associated facilities provide Heyfield with a complete range of health facilities.

**14 Licola Road
Heyfield 3858
Phone: 03 5139 7979**

Latrobe Regional Hospital (LRH)

LRH offers a suite of medical and specialty services for a population of more than 260,000 in the Gippsland region in south-east Victoria. It provides emergency care, elective surgery, maternity, aged care, rehabilitation, pharmacy and mental health services both at the hospital and at sites across the Gippsland region. Medical and radiation oncology is provided by the Gippsland Cancer Care Centre at LRH.

Koori Liaison Officer

LRH provides a Koori Liaison Officer to assist Aboriginal community members to access services at the hospital.

Latrobe Regional Hospital ensures that patients are linked to the Aboriginal Health Service and other local health providers, ensuring total health care to the Indigenous population.

**Princes Highway
Traralgon West 3844
Phone: 03 5173 8000
www.lrh.com.au**

Mental Health Koori Liaison Services

To ensure Aboriginal and Torres Strait Islander communities receive access to appropriate mental health care, Latrobe Regional Hospital offers Aboriginal liaison services to meet the needs of those communities.

**20 Washington Street
Traralgon 3844
Phone: 03 5128 0100
www.lrh.com.au**

Maffra Hospital

Maffra Hospital provides a variety of services to the Maffra and district community. The facility includes nine acute/sub-acute care beds and 30 high care residential aged care places.

**48 Kent Street
Maffra 3860
Phone: 03 5147 0100**

Neerim District Health Service

Neerim District Health Service provides

specialised acute care working in conjunction with local medical practitioners, visiting specialists and allied health professionals. Other services such as pathology, maternal health, podiatry and physiotherapy are also available.

**29-39 Main Neerim Road
Neerim South 3831
Phone: 03 5628 1226
www.neerimhealth.org.au**

Orbost Regional Health (ORH)

ORH provides acute, emergency, medical, surgical and obstetric services, and is a leader in the provision of small town rural birthing services in Victoria. Boasting a large array of community health, welfare and aged care services, Orbost Regional Health strives to meet community needs utilising a flexible funding model.

Koori Liaison Services

Provides support to Aboriginal clients at ORH.

**104-107 Boundary Road
Orbost 3888
Phone: 03 5154 6666
www.orbostregionalhealth.com.au**

South Gippsland Hospital

The South Gippsland Hospital has 16 inpatient beds, an Urgent Care Department, low risk birthing services and an operating theatre.

**83-87 Station Road
Foster 3960
Phone: 03 5683 9777
www.southgippslandhospital.org.au**

West Gippsland Healthcare Group

West Gippsland Healthcare Group provides acute medical and surgical, obstetrics, emergency, community and aged care services, primarily in the Shire of Baw Baw.

Aboriginal Hospital Liaison Officer

This program provides support and assistance to Aboriginal community members attending the hospital.

**Warragul Hospital
Landsborough Street
Warragul 3820
Phone: 03 5623 0611**

DOCTORS' CLINICS

- mulla-mullung (mulla-mull-lung) Doctor

HAVE YOU HAD YOUR FREE 715 CHECK THIS YEAR?

All Aboriginal and Torres Strait Islander people are eligible for a yearly Indigenous-specific health check. This health check (listed as item 715 on the Medicare Benefits Schedule) is designed especially for Indigenous people. The aim of the health checks is to provide Indigenous people with primary health care matched to their needs by supporting early detection, diagnosis and intervention for common and treatable conditions. Ask your doctor for more information today!

Bairnsdale

Advantage Health Point
46-56 Nicholson Street
Bairnsdale 3875
Phone: 03 5152 3500

Bairnsdale Medical Group
438 Main Street
Bairnsdale 3875
Phone: 03 5152 4123

Bairnsdale Family Medical Centre
12-30 Howitt Avenue
Eastwood 3875
Phone: 03 5152 7135

Gippsland & East Gippsland Aboriginal Co-Operative (GEGAC)
37-53 Dalmahoy Street
Bairnsdale 3875
Phone: 03 5150 0700

Macleod Street Medical Centre
93 Macleod Street
Bairnsdale 3875
Phone: 03 5152 5145

Bruthen

Bruthen Medical Centre
51 Main Street
Bruthen 3885
Phone: 03 5155 8300

Buchan

Buchan Bush Nursing Centre
61 Main Road
Buchan 3885
Phone: 03 5155 9222

Bunyip

Bunyip Medical Centre
11 A'Beckett Street
Bunyip 3815
Phone: 03 5629 5111

Cann River

Cann Valley Bush Nursing Centre
27 Monaro Highway
Cann River 3890
Phone: 03 5158 6210

Churchill

Hazelwood Health Centre
9a Georgina Place
Churchill 3842
Phone: 03 5122 2555

Latrobe Community Health Service
20-24 Phillip Parade
Churchill 3842
Phone: 03 5122 0400

Cowes

Cowes Medical Centre
164 Thompson Avenue
Cowes 3922
Phone: 03 5951 1800

Grandview Family Clinic
Grandview Grove
Cowes 3922
Phone: 03 5951 1860

Dargo

Dargo Bush Nursing Centre
72 Lind Avenue
Dargo 3862
Phone: 03 5140 1246

Drouin

Bank Place Medical Centre
4 Bank Place
Drouin 3818
Phone: 03 5625 3000

Central Clinic (Drouin)
61 Commercial Place
Drouin 3818
Phone: 03 5625 5044

Civic Park Medical Centre
79 Young Street
Drouin 3818
Phone: 03 5625 3355

West Gippsland Aboriginal Health Service
25 Young Street
Drouin 3818
Phone: 03 5625 6500

Ensay

Ensay Bush Nursing Centre
5063 Great Alpine Road
Ensay 3895
Phone: 03 5157 3215

Foster

Foster Medical Centre
97 Station Street
Foster 3960
Phone: 03 5682 2088

Sarah Cannon Clinic
20 Coopers Road
Foster 3960
Phone: 03 5682 2059

Gelantipy

Gelantipy Bush Nursing Centre
1 Saleyards Road
Gelantipy 3885
Phone: 03 5155 0274

Grantville

Grantville Medical Centre (Wonthaggi HC)
Shop 2/1524 Bass Highway
Grantville 3984
Phone: 03 5678 8029

Heyfield

Heyfield Medical Centre
19 Tyson Road
Heyfield 3858
Phone: 03 5148 2201

Inverloch

Inverloch Clinic (Leongatha Healthcare)
18 Reilly Street
Inverloch 3996
Phone: 03 5674 2700

A'Beckett Street Medical Centre (Wonthaggi Healthcare)
25 A'Beckett Street
Inverloch 3996
Phone: 03 5674 1207

Korumburra

Korumburra Medical Centre
50 Radovick Street
Korumburra 3950
Phone: 03 5655 1355

Lakes Entrance

Cunninghame Arm Medical Centre
8 Whikers Street
Lakes Entrance 3909
Phone: 03 5155 2300

Gippsland Lakes Community Health
18 Jemmeson Street
Lakes Entrance 3909
Phone: 03 5155 8300

Lakes Entrance Aboriginal Health Association (LEAHA)
18-26 Jemmeson Street
Lakes Entrance 3909
Phone: 03 5155 8465

Lake Tyers

Lake Tyers Health & Children's Service (LTHCS)
1 Rules Road
Lake Tyers 3887
Phone: 03 5155 8500

Leongatha

Leongatha Medical
14 Koonwarra Road
Leongatha 3953
Phone: 03 5662 2201

Jeffrey Street Clinic
32 Jeffrey Street
Leongatha 3953
Phone: 03 5662 2201

Long Street Family Medicine
1 Long Street
Leongatha 3953
Phone: 03 5662 4455

Loch Sport

Loch Sport Community Health Centre
National Park Road
Loch Sport 3851
Phone: 03 5146 0349

Longwarry

Longwarry Medical Centre
6 Flinders Road
Longwarry 3816
Phone: 03 5629 9200

Maffra

Johnson Street Clinic
2/119 Johnson Street
Maffra 3860
Phone: 03 5141 1889

Maffra Medical Group
160 Johnson Street
Maffra 3860
Phone: 03 5147 1011

Mallacoota

Mallacoota Medical Centre
21-23 Maurice Avenue
Mallacoota 3892
Phone: 03 5158 0777

Metung

Metung — Gippsland Lakes Community Health
Corner of Metung Road and Hardys Road
Metung 3904
Phone: 03 5155 8300

Mirboo North

Mirboo North Medical Centre
27a Giles Street
Mirboo North 3871
Phone: 03 5668 1234

Moe

Central Gippsland Family Practice
28 George Street
Moe 3825
Phone: 03 5127 9800

Latrobe Community Health Moe After Hours Medical Service (MAHMS)
42 Fowler Street
Moe 3825
7 days a week
7.30-10.30 pm Monday to Friday
4.30-10.30 pm Saturday
2.30-10.30 pm Sunday and public holidays
Phone: 03 5127 9111

Moe Medical Group
5-7 Lloyd Street
Moe 3825
Phone: 03 5127 3333

Tanjil Place Medical Centre
46-48 Albert Street
Moe 3825
Phone: 03 5126 1344

Morwell

Buckley St Family Practice
Corner of Buckley Street and Hopetoun Street
Morwell 3840
Phone: 03 5133 7999

Central Gippsland Health Service (Ramahyuck)
Corner of Buckley Street and Collins Street
Morwell 3840
Phone: 03 5136 5128

headspace Morwell
Corner of George Street and Hazelwood Road
Morwell 3840
Phone: 03 5136 8300

Hollie Drive Medical Centre
5 Hollie Drive
Morwell 3840
Phone: 03 5135 3555

Latrobe Community Health Service GP Clinic
Buckley Street
Morwell 3840
Phone: 03 5136 5400

Latrobe Valley Medical Centre
7 Hopetoun Avenue
Morwell 3840
Phone: 03 5134 4333

Mid Valley Family Medicine
Shop 59 Mid Valley Shopping Centre
Morwell 3840
Phone: 03 5134 3888

The Healthcare Centre
239 Princes Highway
Morwell 3840
Phone: 03 5133 9966

Neerim South

Neerim South Medical Centre
85-87 Main Neerim Road
Neerim South 3831
Phone: 03 5628 1302

Newborough

Newborough Health
41 Monash Street
Newborough 3825
Phone: 03 5127 2700

Rutherglen Medical Centre
27 Rutherglen Street
Newborough 3825
Phone: 03 5126 4345
Mobile: 0411 411 856

Nowa Nowa

Nowa Nowa Community Health Centre
Princes Highway
Nowa Nowa 3887
Phone: 03 5155 7294

Omeo

Omeo Medical Centre
12 Easton Street
Omeo 3898
Phone: 03 5159 0140

Orbost

Moogji Aboriginal Council
52 Stanley Street
Orbost 3888
Phone: 03 5154 2133

Orbost Medical Clinic
Tyndall Street
Orbost 3888
Phone: 03 5154 6777

Paynesville

Paynesville Medical Centre
6 Fleischer Street
Paynesville 3880
Phone: 03 5156 7243

Rawson

Rawson Community Health Centre
Pinnacle Drive
Rawson 3825
Phone: 03 5165 3236

Rosedale

Rosedale Community Health Centre
2-8 Cansick Street
Rosedale 3847
Phone: 03 5199 2333

Rosedale Family Medical Centre
Shop 1&2
95-99 Prince Street
Rosedale 3847
Phone: 03 5199 2124

San Remo

San Remo Medical Clinic
123 Marine Parade
San Remo 3925
Phone: 03 5678 5402

Sale

Clocktower Medical Centre
284 Raymond Street
Sale 3850
Phone: 03 5144 4788

Inglis Medical Centre
12 Inglis Street
Sale 3850
Phone: 03 5143 0077

Ramahyuck District Aboriginal Corporation
117 Foster Street
Sale 3850
Phone: 03 5144 6511

Sale Medical Centre
49 Desailly Street
Sale 3850
Phone: 03 5144 5766

Swifts Creek

Swifts Creek Bush Nursing Centre
McMillan Street
Swifts Creek 3896
Phone: 03 5157 3215

Toora

Toora Medical Centre
4 Welshpool Road
Toora 3962
Phone: 03 5686 2203

Trafalgar

Trafalgar Medical Centre
24a Contingent Street
Trafalgar 3824
Phone: 03 5633 2211

Traralgon

Breed Street Clinic
37 Breed Street
Traralgon 3844
Phone: 03 5176 1933

Flourish Medical Group
2/12 Deakin Street
Traralgon 3844
Phone: 03 5174 6711

Hillcrest Family Medicine
26 Seymour Street
Traralgon 3844
Phone: 03 5174 2345

iSpot Clinic
10 Hazelwood Road
Traralgon 3844
Phone: 1300 554 486

Latrobe Community Health Service
Corner of Princes Highway and Seymour Street
Traralgon 3844
Phone: 1800 242 696

Latrobe Medical Centre
24 Kay Street
Traralgon 3844
Phone: 03 5174 0555

Traralgon Doctors
124 Princes Highway
Traralgon 3844
Phone: 03 5174 6766

Saint Luke's Medical Centre
2/33-35 Grey Street
Traralgon 3844
Phone: 03 5173 6464

Traralgon Medical Centre
11 Kay Street
Traralgon 3844
Phone: 03 5174 5350

Tristar Medical Group
52 Grey Street
Traralgon 3844
Phone: 03 5176 5525

Warragul

Central Clinic
170 Normanby Street
Warragul 3820
Phone: 03 5622 3377

Gladstone Street Medical Clinic
46 Gladstone Street
Warragul 3820
Phone: 03 5622 0444

Latrobe Community Health Service
31 Mason Street
Warragul 3820
Phone: 1800 242 696

Victoria Street Medical Clinic
27A Victoria Street
Warragul 3820
Phone: 03 5623 1100

West Gippsland Medical Clinic
11 Barkly Street
Warragul 3820
Phone: 03 5623 2251

Warragul Family Medicine
77 Victoria Street
Warragul 3820
Phone: 03 5622 2973

Wonthaggi

South Gippsland Family Medicine
4-6 Billson Street
Wonthaggi 3995
Phone: 03 5672 4111

Wonthaggi Medical Group
42 Murray Street
Wonthaggi 3995
Phone: 03 5672 1333

Yarragon

Yarragon Medical Centre
1 Campbell Street
Yarragon 3823
Phone: 03 5637 0222

Yarram

Yarram Medical Centre
91 Commercial Road
Yarram 3971
Phone: 03 5182 0333

Yarram Practice (King Street Clinic)
6 King Street
Yarram 3971
Phone: 03 5182 5533

Yinnar

Yinnar Medical Centre
42 Main Street
Yinnar 3869
Phone: 03 5163 1633

PALLIATIVE AND END-OF-LIFE CARE

- woolartbe wirt -wirt (wool-art-be wert-wert)
Take care softly like a feather

Also see Home and Community Care section

When someone has an illness that cannot be cured and will lead to someone dying, palliative care may be suggested. Palliative care is that part of healthcare provided to people who have a progressing illness that will lead to death. Cure is no longer the aim of treatment. Instead, maintaining the best quality of life possible becomes the priority.

Lake Tyers Health and Children's Services (LTHCS)

LTHCS offers palliative and end-of-life services to the community and carers. Please contact for more information.

Phone: 03 5155 8500
Email: lthcsrec@lthcs.org.au

Lakes Entrance Aboriginal Health Association (LEAHA)

LEAHA offers palliative and end-of-life services to the community of Lakes Entrance and their carers, with support of clinical services at Gippsland Lakes Community Health.

Phone: 03 5155 8465
Fax: 03 5155 8475
Email: rachel@leaha.org.au

Moogji Aboriginal Council East Gippsland Inc. (Moogji)

Moogji offers palliative and end-of-life care services through Orbost Regional Health. Please call Moogji for more advice either as a community member or as someone who is a carer of a loved one.

Phone: 03 5154 2133
Email: reception@moogji.com.au

Other service providers within Gippsland

- Bairnsdale Regional Health Service
- Bass Coast Health
- Central Gippsland Health Service
- Gippsland Southern Health Service
- Gippsland Lakes Community Health Service
- Latrobe Community Health Service
- Latrobe Regional Hospital
- Orbost Regional Health
- West Gippsland Healthcare Group
- Yarram and District Health Service

Palliative Care Victoria

For more information go to the website at www.pallcarevic.asn.au and click on the 'Aboriginal Australians' link.

Level 2/182 Victoria Parade
East Melbourne 3002
Phone: 03 9662 9644
Email: info@pallcarevic.asn.au

MEDICATION AND PHARMACY

- tharamba budjeri broondo wrak (tha-ram-ba bud-gerry broon-do wraak) make well tomorrow place.

Closing the Gap Scripts

The Closing the Gap (CTG) Pharmaceutical Benefits Scheme (PBS) Co-payment Measure provides prescription items for Aboriginal and Torres Strait Islander patients at a lower patient contribution level or free of charge.

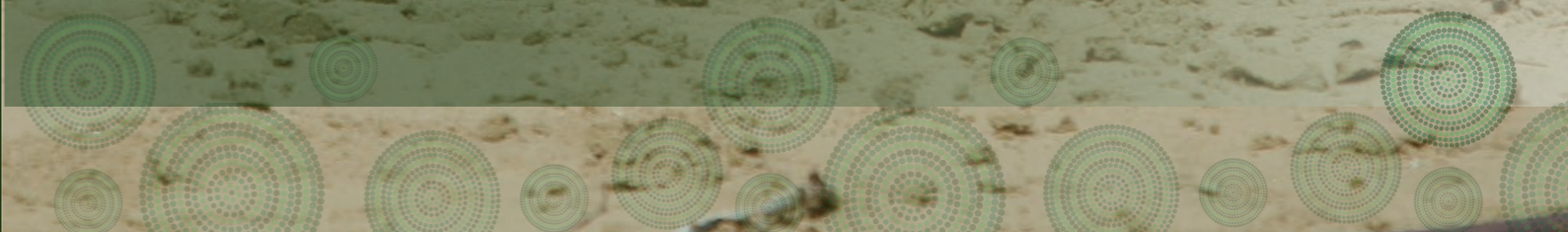
This program is available to patients with chronic disease or chronic disease risk factors. It aims to improve quality use of medicines and access to medicines by reducing cost barriers.

This means if you or someone in your care are taking medication for a long-term illness, or are at risk of developing a long-term illness due to family history or personal history, then you may be entitled to receive your medication under the Closing the Gap Scheme.

For more information, talk to your doctor before the script is written or talk to your local pharmacist.



Community Support Services



ABORIGINAL LIAISON SERVICES

- *birndanga kallack (burn-dung-a cull-luck) like the arm of the tree that reaches out to help.*

Aboriginal Liaison Officers are also available in many Gippsland hospitals. See Health section.

Centrelink

Indigenous Specialist Officer

Provides information to Aboriginal people about services and programs that Centrelink offers.

150-154 York Street
Sale 3850
Free call: 1800 136 380
www.centrelink.gov.au

Child Protection

Aboriginal Liaison Worker

Provides support to Aboriginal clients.

7-11 Hazelwood Road
Morwell 3840
Phone: 03 5136 2400
www.dhs.vic.gov.au

Victorian Department of Health and Human Services (DHHS)

Provides advice and assists with maintaining and building relationships between DHS and Aboriginal organisations.

64 Church Street
Traralgon 3844
Phone: 03 5177 2500
www.dhhs.vic.gov.au

Latrobe City Council

Aboriginal Liaison Officer

Provides a link between the Aboriginal community and Latrobe City Council services.

141 Commercial Road
Morwell 3840
Phone: 03 5128 5634
www.latrobe.vic.gov.au

Latrobe Community Health Service

Aboriginal Liaison Officer

Provides Koori Liaison Officers in program areas across the organisation to support Aboriginal community members to easily access services.

Phone: 1800 242 696
www.lchs.com.au

UnitingCare Gippsland

Integrated Family Services Worker

Provides support to Indigenous families through the Family Services program in Wellington.

126 Raymond Street
Sale 3850
Phone: 03 5144 7777
www.ucg.org.au

Victoria Police

Aboriginal Community Liaison Officer

This position aims to build trust and understanding between Victoria Police and the Aboriginal community.

8-10 Hazelwood Road
Morwell 3840
Phone: 03 5131 5000

45-47 Main Street
Bairnsdale 3875
Phone: 03 5150 2600

www.police.vic.gov.au

DISABILITY SERVICES

Also see Home and Community Care section.

Department of Health and Human Services (DHHS) Disability Intake and Response

The Intake and Response Service provides information about supports and services and can also provide assistance with planning and short-term support to people with disabilities, their families and carers in their local area. You can request disability support if you have a disability, the disability affects your mobility, communication, self-care or self-management, and your support request meets specific requirements related to the service you are seeking.

Telephone: 1800 783 783

Noweyung

Noweyung continues its evolution as an organisation providing a range of quality disability support services to individuals aimed at delivering better outcomes. Noweyung provides a range of support services to adults in the areas of education, training, community development, pre-employment, employment and advocacy.

Head Office:
84 Goold Street
Bairnsdale 3875
Phone: 03 5153 0111
Fax: 03 5152 4605

45 Forest Road
Orbost 3888
Phone: 03 5154 1879
Fax: 03 5154 1133

Latrobe City Council

To become involved or to find out more information please contact a friendly member of the Aged and Disability Services disability program.

Phone: 1300 367 700

Gippsland & East Gippsland Aboriginal Co-Operative (GEGAC)

GEGAC provides assistance with respite activities and a disability planner to assist families to connect with community supports.

37-53 Dalmahoy Street
Bairnsdale 3875
Phone: 03 5150 0700
Email: enquiries@gegac.org.au

Active Property Services

Affordable and appropriate housing for people with a disability.

14 High Street
Yarraville 3013
Phone: 03 9314 8555
Free call: 1800 630 946

Housing Choices Australia

State-wide specialist transitional housing services for people with disabilities.

Level 3, 350 Queens Street
Melbourne 3000
Phone: 1300 312 447
Email: info@hcaa.org.au

Interchange Gippsland

Offers respite and advocacy.

Phone: 1300 736 765
Email: admin@icg.asn.au
www.icg.asn.au

ELDERS' SERVICES

- *bunjil wrak (bun-jill wraak) Elders place*

Gippsland & East Gippsland Aboriginal Co-Operative (GEGAC)

Planned Activity Groups

GEGAC provides day outings, group meals, occasional trips to visit other centres, games such as bingo and other social activities including fishing, pictures and shows.

Elders' Lunches

GEGAC provides a healthy and nutritious cooked lunch for Elders at the GEGAC Elders Building.

**37-53 Dalmahoy Street
Bairnsdale 3875
Phone: 03 5150 0760**

Lakes Entrance Aboriginal Health Association (LEAHA)

The Koori Elders group meets every Friday and provides a chance for local Elders to catch up, have lunch together, and participate in cultural, art and craft activities and exercise programs. Occasional day trips are also organised on these days.

**18-26 Jemmeson Street
Lakes Entrance 3909
Phone: 03 5155 8465**

Latrobe City Council

Koorie Elders Planned Activity Group

The Koorie Elders Group meets every Friday in the community hall. The group is provided with a two-course lunch and transport if required. The day consists of a large range of activities including cards, bingo, craft, artwork and social interaction with one another. Activities also include some day trips to Melbourne, barbecues and local market and event attendance.

**5 Queens Parade (Community Hall address)
Traralgon 3840
Phone: 1300 367 700
socialsupport@latrobe.vic.gov.au
www.latrobe.vic.gov.au**

Braiakaulung Advisory Committee

Facilitated by Latrobe City Council, this group provides a consultancy approach for Latrobe City to ensure it meets the needs of the local Aboriginal community.

**141 Commercial Road
Morwell 3840
Phone: 03 5128 5634
www.latrobe.vic.gov.au**

Latrobe Community Health Service (LCHS)

Mayfair House - Koorie Elders' Group

The Koorie Elders Group runs weekly at Mayfair House. Lunch and transport are provided. A variety of activities are provided or you can just have a chat and a cuppa with other Koorie Elders.

Overnight Respite

Mayfair House is a three-bedroom house where Koorie Elders can stay for a night, or up to a week. It provides a rest from home or just a break. A worker is available at Mayfair House for support.

Commonwealth Respite and Carelink Centre
Identifies and provides respite care for Indigenous carers.

**81-85 Buckley Street
Morwell 3840
Phone: 1800 242 696
www.lchs.com.au**

Moogji Aboriginal Council East Gippsland Inc. (Moogji)

Moogji offers planned activity groups through Orbst Regional Health. Contact for more details.

**52 Stanley Street
Orbost 3888
Phone: 03 5154 2133
Email: reception@moogji.com.au**

GAMBLERS HELP SERVICES

Latrobe Community Health Service (LCHS)

Gamblers Help Services provides assistance to people affected by their own or someone else's gambling. It is a free and confidential service. Counselling and information are available as well as financial counselling that aims to give support for resolving financial difficulties. Gamblers Help is located at Latrobe Community Health Service sites throughout Gippsland. Contact the Gambling Information and Support team.

Phone: 1800 242 696

Victorian Responsible Gambling Foundation - Gambler's Help

We offer free, confidential information, advice and counselling to anyone affected by gambling in Victoria.

Free call: 1800 858 858

Gambler's Help Youthline

Offering help to all youth and parents of youth.

Free call: 1800 262 376

LOCAL ABORIGINAL NETWORKS

A Local Aboriginal Network (LAN) is made up of Aboriginal people who work together to provide a voice for their community, identify local issues and priorities and plan for the future. Across Victoria LANs meet regularly and build community participation. LAN participation is open to all local Aboriginal community members. Each LAN develops a local community plan that identifies their strengths, resources and describes the vision, aspirations and priorities of their local community. LANs are involved in many activities. These include community events and gatherings, building relationships with local service providers and organisations, linking with local government planning, working with Local Aboriginal Education Consultative Groups (LAECG) to increase youth participation and planning, and supporting community initiatives such as men's groups, homework centres and cultural identity projects.

**Leonie Solomon-Green
33 Breed Street
Traralgon 3844
Phone: 03 5174 7308
Mobile: 0408 054 152
Email: leonie.solomon-green@dpc.vic.gov.au**

**Alice Pepper
574 Main Street
Bairnsdale 3875
Phone: 03 5152 0631
Mobile: 0437 985 840
Email: alice.pepper@dpc.vic.gov.au**

GATHERING SPACES

- waru quarenook wrak (waa-ru quoren-nook
wraak) our meeting place.

Anglicare Gippsland

Kommall Gathering Place

Available to any Koorie community groups to provide opportunities for social contact.

Programs are available for all ages and members of the Koorie community and include men's woodworking, women's drumming and Church services.

Bragun Men's Group

Bragun Men's Group is provided in partnership with Gippsland & East Gippsland Aboriginal Co-Operative.

Hourigan Road

Morwell 3840

Phone: 03 5135 9510

www.anglicarevic.org.au

Gippsland & East Gippsland Aboriginal Co-Operative (GEGAC)

GEGAC provides a space for meetings and gatherings for Aboriginal community members and organisations.

Bairnsdale

37-53 Dalmahoy Street

Bairnsdale 3875

Phone: 03 5150 0700

Morwell

9 Maryvale Crescent

Morwell 3840

Phone: 03 5134 3816

Email: enquiries@gegac.org.au

The Gathering Place

99 Bluckley Street

Morwell 3840

Email: gatheringplace3840@gmail

Bairnsdale Regional Health Services (BRHS) - Warrawee Room

BRHS houses the Warrawee Room, a gathering place located in the hospital for Indigenous people to use. Follow the footprints from the entrance to the room.

122 Day Street

Bairnsdale 3875

Phone: 03 5150 3333

Ramahyuck District Aboriginal Corporation (RDAC)

All sites provide a space for meetings and gatherings for Aboriginal community members and organisations.

117 Foster Street

Sale 3850

Phone: 03 5143 1644

15-17 Collins Street

Morwell 3840

Phone: 03 5136 5100

25 Young Street

Drouin 3818

Phone: 03 5625 6500

64 Watt Street

Wonthaggi 3995

Phone: 03 5672 1444

Lakes Entrance Aboriginal Health Association (LEAHA)

LEAHA offers a gathering space for community members to come and have a cup of tea/yarn.

18-26 Jemmeson Street

Lakes Entrance 3909

Phone: 03 5155 8465

HOME AND COMMUNITY CARE SERVICES (HACC)

- woolartbe bunjil (wool-art-be bun-jill) taking care of Elders

Baw Baw Shire Council

The HACC program provides a range of support services. To be eligible for HACC services you need to be frail aged and/or have a disability.

Civic Place

Warragul 3820

Phone: 03 5624 2411

www.bawbawshire.vic.gov.au

Wellington Shire Council

Wellington Shire Council provides HACC services through Central Gippsland Health Service and Yarram and District Health Service.

www.wellington.vic.gov.au

Central Gippsland Health Service

Phone: 03 5143 8600

Yarram and District Health Service

Phone: 03 5182 0222

Gippsland Lakes Community Health

Home and Community Care provides basic personal support and home maintenance to help people to live independently at home. Home and Community Care services includes vacuuming, mopping, cleaning the bathroom and toilet, and washing. Personal Care is help with showering, toileting, grooming and dressing. Respite Care staff care for a person whose family or carer needs a short break.

183 Jemmeson Street

Lakes Entrance 3909

Phone: 03 5155 8300

www.glch.org.au

Bass Coast Shire Council

The Council's Home and Community Care program provides a range of services designed to support you, or the person you care for, to stay active, independent and living at home for as long as possible. Helping people stay active, involved and doing as much for themselves as possible is proven to help people stay more independent with a greater sense of wellbeing. Frail older people, people with disability and carers of these people who are residents of Bass Coast are eligible for an assessment. Assessment enables individual needs to be recognised and met through the Council or other health services.

76 McBride Avenue

Wonthaggi 3995

Phone: 03 5671 2211

www.basscoast.vic.gov.au

Gippsland & East Gippsland Aboriginal Co-Operative (GEGAC)

Provides HACC delivered meals and property maintenance to Aboriginal people across Gippsland.

37-53 Dalmahoy Street

Bairnsdale 3875

Phone: 03 5150 0700

Email: enquiries@gegac.org.au

www.gegac.org.au

Lake Tyers Health and Children's Services

Provides aged care packages to community members at Lake Tyers.

**1 Rules Road
Lake Tyers 3887
Phone: 03 5155 8500**

Latrobe City Council

The Latrobe City Council HACC program provides a broad range of flexible support services to assist frail older people, people with functional disabilities and their carers. Services include HACC services, General Home Care, Personal Care, In Home Respite, Meals on Wheels, Home Maintenance, Planned Activity Groups, Supporting Carers Programs, and We Care – Friendly Visiting Program.

We give priority to people who need the service most, such as frail aged people, people with disabilities and carers of these people.

You can refer yourself or a friend or a relative for the services. A GP referral is not required.

For more information or to get involved please contact a friendly member of the Aged and Disability Services team.

**Phone: 1300 367 700
www.latrobe.vic.gov.au**

South Gippsland Shire Council

Services include Personal Care, Home Care, Respite Care, Meal Services, Community Transport and Home Maintenance. A minimal fee is charged for services. Services recognise a person's ability to pay, so fees are established at the time of assessment based on a number of factors including health and current circumstances.

**9 Smith Street
Leongatha 3953
Phone: 03 5662 9370
www.southgippsland.vic.gov.au**

Ramahyuck District Aboriginal Corporation (Ramahyuck)

Ramahyuck provides HACC services to clients and their carers who are frail, aged or have a disability.

Services include: domestic assistance; personal care; property maintenance; and Planned Activity Group.

www.ramahyuck.org

**Sale
Phone: 03 5143 1644**

**Morwell
Phone: 03 5136 5100**

**Drouin
Phone: 03 5625 6500**

Latrobe Community Health Service (LCHS)

Latrobe Community Health Service runs the Gippsland Aged Care Assessment Service (ACAS), which assesses eligibility for care in an aged care home and for other Commonwealth-funded programs such as packaged care. If you're eligible for a home care package, we can help you coordinate the services you need to help you remain at home and in your community for as long as possible. We also run planned activity groups that meet to enjoy doing things together in a friendly and supportive environment. Many of these services are offered throughout Gippsland.

**Phone: 1800 242 696
www.lchs.com.au**

HOUSING SERVICES

- *Goongee wrak- (goon-gee wraak) housing place*

Quantum Support Services

Quantum Support Services delivers a high-quality, locally responsive service that meets the needs of individuals, families and young people experiencing disadvantage or crisis. It aims to empower people, particularly the vulnerable, to reach their full potential.

Aboriginal Tenants at Risk (ATAR)

ATAR provides support and advocacy to Aboriginal tenants or prospective tenants of the Office of Housing or Aboriginal Housing Victoria. The program aims to establish, sustain and maintain Aboriginal tenancies and address any issues or factors placing the tenancy at risk.

Youth Homelessness Services

This service assists young people aged between 16 and 19 years who are homeless or at risk of homelessness, and require specific interventions and services in relation to living skills, education and training, access to the private rental market and intensive case management.

**Morwell
227 Princes Drive
Morwell 3840**

**Sale
56B Cunningham Street
Sale 3850**

**Warragul
36 Williams Street
Warragul 3820**

**Bairnsdale
306 Main Street
Bairnsdale 3876**

**Free call: 1800 243 455
Email: mail@quantum.org.au
www.quantum.org.au**

SalvoCare Eastern

SalvoCare Eastern can assist with crisis and short-term housing, access to long-term housing, and housing information and referral to support services in South Gippsland, Bass Coast and Baw Baw shires.

**2 Long Street
Leongatha 3953
Phone: 03 5662 6400 or 1800 221 200
www.salvationarmy.org.au**

Within Australia

'Safe as Houses'

Mental health support for secured tenancies.

The program is available to adults (aged 16-64) based in South Gippsland, Bass Coast, Wellington and East Gippsland shires who have a diagnosis of a severe and enduring mental illness who are experiencing homelessness or are at risk of homelessness.

**265 Main Street
Bairnsdale 3875
Phone: 1300 737 412 or 03 5153 1823
www.withinaustralia.org.au**

Victorian Aboriginal Child Care Agency (VACCA)

Indigenous Access Program/Kurnai Youth Homelessness Case Worker.

This service provides an entry point for Aboriginal youth homelessness in Latrobe.

**25-27 Rintoull Street
Morwell 3840
Phone: 03 5135 6055
www.vacca.org.au**

Safe Steps Family Violence Response Centre

This service provides 24-hour crisis telephone support, safety plans and emergency accommodation.

Free call: 1800 015 188
www.safesteps.org.au

Meerindoo (Nungurra) Youth Accommodation Services

This service offers emergency youth accommodation for those who are homeless or at risk of becoming homeless. Call GEGAC to request referral form.

87 Dalmahoy Street
Bairnsdale 3875
Phone: 03 5152 2188

Aboriginal Housing Victoria Ltd (AHV)

Aboriginal Housing Victoria is a not-for-profit registered housing provider and is the largest Aboriginal housing organisation in Australia. AHV manages 1525 properties in Melbourne and regional Victoria, providing affordable housing to more than 4000 low income Aboriginal and Torres Strait Islander Victorians.

125-127 Scotchmer Street
North Fitzroy 3068
Phone: 1300 724 882
Email: info@ahvic.org.au
www.ahvic.gov.au

Women's Housing Ltd

This organisation provides transitional and long-term housing to single women and/or women with children in a housing crisis.

Suite 1, 21 Cremorne Street
Richmond 3121
Phone: 03 9412 6868
Email: info@womenshousing.com.au
www.womenshousing.com.au

Community Housing Limited (CHL)

CHL is a not-for-profit housing organisation that delivers affordable housing to those in need. It provides rental housing at subsidised market rent to the most vulnerable in the community. It provides a range of services in different regions. Its key areas of service include specialised tenancy management services, homelessness and transitional housing services, asset management and property maintenance, and affordable housing suitable for those with a disability or from an Aboriginal background.

12-14 Church Street
Morwell 3840
Phone: 1300 245 468

Shop 4, Rivera Plaza
Bairnsdale 3875
www.chl.org.au

East Coast Housing Association

Provides quality affordable housing for low to middle income families.

2/57 Lloyd Street
Moe 3825
Phone: 03 5127 71660

Salvation Army Crisis Centre St Kilda

After hours support for financial and material aid. Support for housing, family violence and AOD.

4B Upton Road
St Kilda 3182
Phone: 03 9536 7777
Free call: 1800 267 727

FAMILY & DOMESTIC VIOLENCE SERVICES

*- ngalko pandean wrak (naal-co pan-de-an wraak)
no fighting place.*

If you or someone you know is in immediate danger please phone 000 (triple zero).

Gippsland & East Gippsland Aboriginal Co-Operative (GEGAC)

Willaneen Women's Shelter

Willaneen Women's Shelter, Willaneen, provides short-term crisis accommodation for Aboriginal and non-Aboriginal women and children who are experiencing or are escaping family/domestic violence. Willaneen provides a communal living arrangement.

Children Youth and Family Services

Willaneen has an after-hours outreach component linked with Quantum Support Services and Women's Domestic Violence Crisis Service.

Family Violence Outreach Program

The program provides psychosocial rehabilitation support to clients of Willaneen Women's Shelter as well as those referred by internal or external organisations.

This involves providing intensive support, practical assistance and advocacy.

Phone: 03 5150 0712
Email: cyfsreception@gegac.org.au
www.gegac.org.au

Sexual Assault Crisisline

Crisis counselling for people who have experienced sexual assault.

Phone: 1800 806 292
www.sacl.com.au

Elizabeth Morgan House Aboriginal Women's Refuge

Elizabeth Morgan House provides a range of support to Aboriginal women and children experiencing family violence from crisis to recovery programs and 24-hour crisis support.

Phone: 03 9482 5744
www.emhaws.org.au

Aboriginal Family Violence Prevention and Legal Service (FVPLS) Victoria

FVPLS provides counselling and legal support to victims/survivors of sexual assault and works with families affected by violence.

27 Pyke Street
Bairnsdale 3875
Phone: 03 5153 2322
Free call: 1800 105 303
www.fvpls.org

Ramahyuck District Aboriginal Corporation

Ramahyuck offers social, emotional and wellbeing therapists to support community members.

Sale: 03 5143 1644
Morwell: 03 5136 5100
Drouin: 03 5625 6500
www.ramahyuck.org

Relationships Australia – Victoria (RAV)

Aboriginal Family and Relationship Support

RAV provides support to Aboriginal and Torres Strait Islander families and individuals to help strengthen the family relationship. It provides free counselling, medication, relationship counselling and parenting programs.

Phone: 03 5175 9500
Toll free: 1300 364 277
Email: traralgon@rav.gov.au
www.deadlyrav.com.au

Gippsland Women's Health

Gippsland Women's Health offers a range of information services for all women and health professionals throughout the Gippsland region. These services are free and confidential. It is committed to assisting women of all ages to optimise their health and wellbeing. Gippsland Women's Health is an independent regional service run by women for women based on the social model of health. Services provided include support services, health promotion and family violence prevention.

56B Cunninghame Street
Sale 3850
Phone: 03 5143 1600
www.gwhealth.asn.au

Latrobe Community Health Service (LCHS)

Case Management for Indigenous Men who use Violence provides case management Gippsland-wide and includes a service to house men who have been left homeless due to family violence.

Individual counselling is provided by a non-Aboriginal counsellor with secondary consultation and cultural support from a Koorie worker. Brokerage money is also available to assist with private rental and furniture provision.

81-85 Buckley Street
Morwell 3840
Phone: 03 5127 9189
Free call: 1800 242 696
www.lchs.com.au

Koorie Men's Behaviour Change Program (CHOICES)

In partnership with Gippsland & East Gippsland Aboriginal Co-Operative, CHOICES provides a 16-week structured men's behaviour change program, responding to family violence.

Groups are provided in East Gippsland and Latrobe and at Wulgunggo Ngalu.

Free call: 1800 242 696
www.lchs.com.au

Gippsland Centre Against Sexual Assault (GCASA)

Gippsland Centre Against Sexual Assault assists people who have experienced sexual assault (past and recent), their families and other supporters with ongoing support, counselling and group work.

A 24/7 multidisciplinary crisis care unit operates in Latrobe, Wellington and East Gippsland shires. The primary offices are in Morwell and Bairnsdale. Outreach sessions are offered in several towns across Gippsland including Warragul, Leongatha, Sale and Orbost.

31-41 Buckley Street
Morwell 3840
Phone: 03 5134 3922
Free call: 1800 806 292
www.gcasa.org.au

Victoria Police – Sexual Offences and Child Abuse Units

The Sexual Offences and Child Abuse Units (SOCA) are staffed by experienced and qualified police members specially trained to assist with responding to and investigating adult sexual assault and child abuse.

Direct lines (not to be used in an emergency):

Morwell: 03 5131 5000
Sale: 03 5143 5622
Bairnsdale: 03 5150 2675
www.police.vic.gov.au

Quantum Support Services

Family Violence Services

Quantum provides a specialist family violence support service to women and their children within the Baw Baw, Latrobe and Wellington shires. Family violence workers deliver outreach and office-based services from Warragul, Morwell and Sale offices.

The program offers a central intake service from the Morwell office to women and their children, providing crisis assistance, advice and referral for ongoing family violence case management support. The After Hours Family Violence Service is managed by Quantum for the entire Gippsland region.

Free call: 1800 243 455
www.quantum.org.au

Victorian Aboriginal Child Care Agency (VACCA)

The Morwell office provides a range of VACCA's Aboriginal child and family services to the Aboriginal community located in the eastern regional area surrounding Morwell. Services include family violence intake, Indigenous intake for family violence in Latrobe, Baw Baw and Wellington, Indigenous Family Violence Case Worker, and Partner Contact for Indigenous Men Who Use Violence Program. The Morwell office facilitates partner contact for families in conflict through Koorie Women's Services.

25-27 Rintoull Street
Morwell 3840
Phone: 03 5135 6055
www.vacca.org.au

Safe Steps – Family Violence Response Centre

This service provides 24-hour crisis support including crisis telephone support, safety plan and emergency accommodation.

Phone: 1800 015 188
www.safesteps.org.au

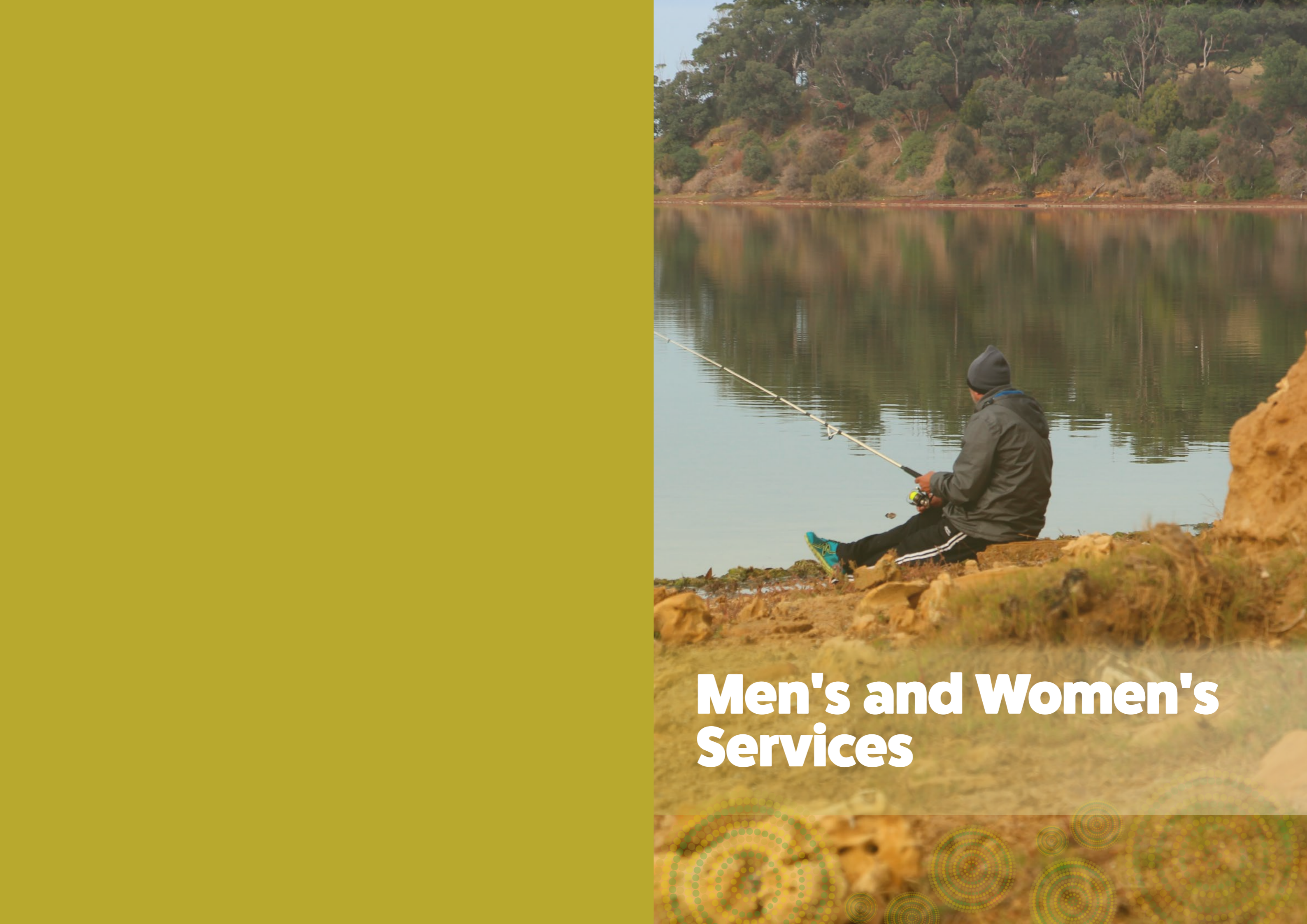
Yoowinna Wurnalung Healing Service

The service provides programs and services that support Aboriginal women, children, young people, men and same-sex couples affected by family violence. It includes advocacy, counselling, referrals, education and information, and social recreational and cultural activities.

Strong Men Strong Communities Project

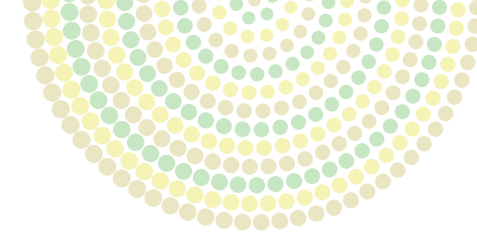
This project aims to work with Aboriginal men to prevent, reduce and respond to all forms of family and community violence. The program is designed to assist Aboriginal men to identify their emotions and personal strengths and in doing so, discover their own leadership potential and develop a vision for a safer life, safer family and ultimately safer community.

11 Heatherlea Grove
Lakes Entrance 3909
Phone: 03 5155 8420
www.glch.org.au



Men's and Women's Services





MEN'S SERVICES

- gunai wrak (gun-eye wraak) man place

Gippsland and East Gippsland Aboriginal Co-Operative (GEGAC)

GEGAC offers outreach workers to support Aboriginal men with specific issues. To get involved with an outreach worker, please contact GEGAC medical.

**37-53 Dalmahoy Street
Bairnsdale 3875
Phone: 03 5150 0700
Email: enquiries@gegac.com.au**

Lakes Entrance Aboriginal Health Association (LEAHA)

LEAHA provides a mens health promotion program.

**18-26 Jemmeson Street
Lakes Entrance 3909
Phone: 03 5155 8465
Fax: 03 5155 83**

Moogji Aboriginal Council East Gippsland Inc. (Moogji)

**52 Stanley Street
Orbost 3888
Phone: 03 5154 2133
Fax: 03 5154 2120
Email: reception@moogji.com.au**

Lake Tyers Health and Children's Services

**1 Rules Road
Lake Tyers 3887
Phone: 03 5155 8500
Email: lthcsrec@lthcs.org.au**

Relationships Australia - Victoria (RAV)

Aboriginal Family and Relationship Support

RAV provides support to Aboriginal and Torres Strait Islander families and individuals to help strengthen family relationships. It provides free counselling, medication, relationship counselling and parenting programs.

**Traralgon:
Phone: 03 5175 9500
Toll free: 1300 364 277
Email: traralgon@rav.gov.au
www.deadlyrav.com.au**

Ramahyuck District Aboriginal Corporation (RDAC)

Ramahyuck offers social, emotional and wellbeing therapists to support community members as well as stolen generation support. Please contact your local centre for more details.

**Sale: 03 5143 1644
Morwell: 03 5136 5100
Drouin: 03 5625 6500**

WOMEN'S SERVICES

- woorcut wrak (woor-cut wraak) women's place

Gippsland Women's Health Service

Gippsland Women's Health offers a range of information services for all women and health professionals throughout the Gippsland region. These services are free and confidential. It is committed to assisting women of all ages to optimise their health and wellbeing. Gippsland Women's Health is an independent regional service run by women for women based on the social model of health. Services provided include support services, health promotion and family violence prevention.

**56B Cunninghame Street
Sale 3850
Phone: 03 5143 1600
www.gwhealth.asn.au**

Moogji Aboriginal Council East Gippsland Inc. (Moogji)

Moogji offers assistance to women for women-only health issues.

**Phone: 03 5154 2133
Email: reception@moogji.com.au**

Ramahyuck District Aboriginal Corporation (Ramahyuck)

Ramahyuck offers women's health days. These days are made for women and conducted by women to address women-only health issues along with other related topics.

**Sale
Phone: 03 5143 1644**

**Morwell
Phone: 03 5136 5100**

**Drouin
Phone: 03 5625 6500**

Lake Tyers Health and Children's Services (LTHCS)

LTHCS offers nurses and GPs to do health screen checks for local community women.

**Phone: 03 5155 8500
Email: lthcsrec@lthcs.org.au**

Lakes Entrance Aboriginal Health Association (LEAHA)

LEAHA has a women's health nurse to deal with all female-related health issues in both prevention and acute care.

Phone: 03 5155 8465

Aboriginal Family Violence Prevention and Legal Service (FVPLS) Victoria

This service provides counselling and legal support to victims of sexual assault and works with families affected by violence.

**27 Pyke Street
Bairnsdale 3875
Phone: 03 5153 2322
Free call: 1800 105 303
www.fvpls.org**

Gippsland & East Gippsland Aboriginal Co-Operative (GEGAC)

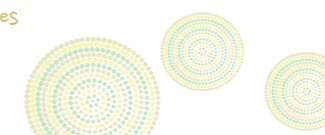
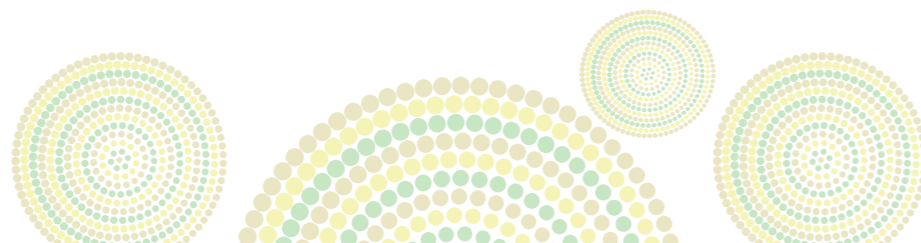
Deadly Migai's

This Aboriginal women's social gathering group provides information and support to access health, welfare and legal services.

**9 Maryvale Crescent
Morwell 3840
Phone: 03 5133 9276**

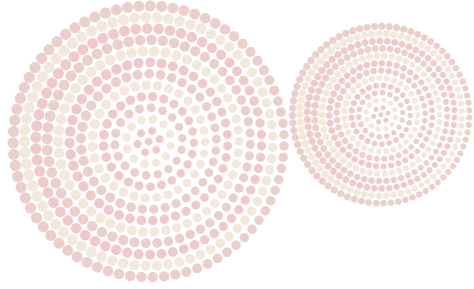
**37-53 Dalmahoy Street
Bairnsdale 3875**

**Phone: 03 5150 0700
Email: enquiries@gegac.com.au**



The image features two young girls in traditional Indigenous Australian attire. They are wearing black t-shirts with white body paint designs, including a handprint on the front of the girl in the foreground. They also have white body paint on their faces and arms, and are wearing headbands made of white feathers and twigs. They are holding green eucalyptus branches. The background is a blurred outdoor setting with trees and a blue sky. A semi-transparent dark red banner is at the bottom, containing the text 'Children's Services' in white. The left side of the image is a solid dark red vertical bar.

Children's Services



CHILDCARE & KINDERGARTEN

- Lidj wrak (lid-j wraak) children place

Lake Tyers Aboriginal Trust

Bung Yarnda (big water) Childcare Centre
Lake Tyers Aboriginal Trust
Rules Road
Lake Tyers 3909
Phone: 03 5156 5475

5 Buckley Street
Morwell 3840
Phone: 03 5136 5148
www.ramahyuck.org

Early Learning Centre - Lakes Entrance

56-58 Myers Street
Lakes Entrance 3909
Phone: 03 5155 2566

Ramahyuck District Aboriginal Corporation (RDAC) Gunnai Lidj

Aboriginal Children's Service

This service meets the cultural, social and development needs of Indigenous children and their families. It provides a flexible range of child care services including long day care and outside school hours care. It has capacity for visiting services such as maternal and child health care.

Boorai Lidj Orbest Family Day Care

52 Stanley Street
Orbest 3888
Phone: 03 5154 2133

Boorai Playgroup - Bairnsdale

67 Francis Street
Bairnsdale 3875
Phone: 0419 352 414

CHILDREN'S SERVICES

Lake Tyers Health and Children's Services (LTHCS)

LTHCS offers a range of children's services. Contact LTHCS for more details.

Phone: 03 5155 8500
Email: lthcsrec@lthcs.org.au

Ramahyuck District Aboriginal Corporation (Ramahyuck)

Ramahyuck offers parenting programs, stronger families programs, Aboriginal family decision-making programs, family preservation and restoration programs, and child-first programs to community members.

Sale Phone: 03 5143 1644
Morwell Phone: 03 5136 5100
Drouin Phone: 03 5625 6500

Gippsland & East Gippsland Aboriginal Co-Operative (GEGAC)

Children, Youth and Family Service

This an inclusive service that will enable children to develop to their full potential regardless of gender, level of ability, social connections or cultural background. The development of children will be supported in the context of family, the community and access to services.

3/107 Nicholson Street
Bairnsdale 3875
Phone: 03 5152 0810
www.gegac.org.au

Lakes Entrance Aboriginal Health Association (LEAHA)

LEAHA offers a range of children's services, including a parenting hub group for families with children aged 0-6 years on Wednesday nights between 9-12pm. Please contact LEAHA for more details.

Phone: 03 5155 8465
Email: contact@leaha.org.au

Latrobe City Council

Early Years Participation Officer

The Council has an Early Years Participation Officer in its Family Services, Early Childhood Health and Development team. It aims to support the community by creating connections to increase participation for Aboriginal and Torres Strait Islander families into early years services, focusing on maternal and child health and preschool.

Phone: 1300 367 700
www.latrobe.vic.gov.au

Victorian Aboriginal Child Care Agency (VACCA)

Aboriginal culture is at the centre of VACCA's programs and informs all work it does and services it provides. VACCA seeks to promote strong connection to culture and community, and to promote Aboriginal child rearing.

Support Programs

Parents and carers of Aboriginal or Torres Strait Islander children receive crisis support, information and advice about available services, opportunities to network, and cultural and other resources.

25-27 Rintoull Street
Morwell 3840
Phone: 03 5135 6055
www.vacca.org

Kids Help Line (1800 55 1800)

Kids Helpline is Australia's only national 24/7 telephone and online counselling and support service for young people aged between five and 25 years.

Free call: 1800 55 1800
www.kidshelpline.com.au

CHILD SAFETY AND PROTECTION SERVICES

- lidj woolartbe wrak (lid-j wool-art-be wraak) take care of child place

Department of Health & Human Services

Koori Liaison Worker

DHHS's Koori Liaison Worker provides support and networking for Aboriginal families and Child Protection Workers.

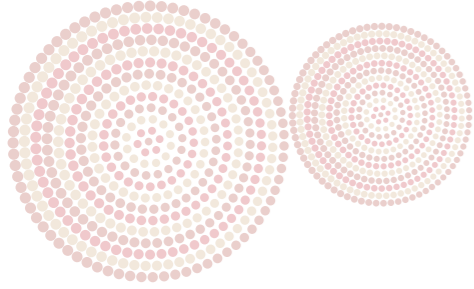
7-11 Hazelwood Road
Morwell 3840
Phone: 03 5136 2400
www.dhs.vic.gov.au

Gippsland & East Gippsland Aboriginal Co-Operative (GEGAC)

Aboriginal Family Led Decision Making (AFLDM)

This program has as its primary goal the safety and wellbeing of Aboriginal children and young people who are at risk of abuse and neglect. Aboriginal Family Decision





Making is an approach to decision-making and planning that is guided by cultural tradition, actively involves the child's family and Aboriginal community and is grounded in a partnership between regional departmental Child Protection Services and the local Aboriginal community.

Cultural Support Planning

A Cultural Support Plan is a way in which workers, carers and family members can come together in order to allow the child in care to develop, maintain and establish links to country, community and family in a safe and appropriate manner. It also enables children who haven't been placed in the out-of-home care system to continue to have contact and connections with their siblings. Given the importance of 'family' and the need for a connection to country and community, this is a crucial factor.

Out of Home Based Care – Kinship Care

Kinship Care is the care provided to a child or sibling group by their extended family or friends when they are unable to be cared for by their own parents. This kinship arrangement may come about through informal family arrangement, Child Protection intervention, and permanent care or Family Court involvement.

Kinship Care: Placement Establishment and Support

The program is designed to facilitate Kinship Care placements by providing a high level of support and consultation with relevant parties at the start of Kinship placements.

Family Group Home

Family Group Home is a residential unit that provides a safe and caring environment for children who are under the care of the Department of Human Services. It caters particularly for large sibling groups.

Integrated Family Services – Indigenous (IFSI)

IFSI is a program that works to promote the safety, stability and development of children, young people and their families. It aims to provide a culturally appropriate service to families to assist them in providing a safe, healthy, nurturing family environment.

**37-53 Dalmahoy Street
Bairnsdale 3875
Phone: 03 5150 0712
Email: enquiries@gegac.org.au
www.gegac.org.au**

Ramahyuck District Aboriginal Corporation (RDAC)

Central Gippsland Aboriginal Health Service Wanjana Lidj

The Family Preservation Program provides an intensive home-based, family-centred program to keep Koori families together and prevent out-of-home placement for Aboriginal and Torres Strait Islander children who are at risk.

The program protects Aboriginal children and young people from abuse and neglect. It also assists in the reunification of families where children and young people are currently in care and prevents their placement in substitute care. The family workers visit and assist families for three to four months, providing practical and emotional support.

**15/17 Collins Street
Morwell 3840
Phone: 03 5136 5100
www.ramahyuck.org**

MATERNAL AND CHILD HEALTH SERVICES

*- wahyung il lidj wrak (wa-young ill lidj wraak)
concept description: Mother duck and her little baby ducks place.*

Doctors / General Practice

See Doctors' Clinics section under Health Services tab

Immunisation

Immunisation is provided at all general practices, Aboriginal medical services and maternal and child health centres throughout Gippsland.

**Free call: 1800 671 811
www.immunise.health.gov.au**

Gippsland & East Gippsland Aboriginal Co-Operative (GEGAC)

Children, Youth and Family Services Aboriginal Best Start

Aboriginal Best Start is an early intervention and prevention program aimed at improving the health, development, learning and wellbeing of children from conception to primary school. It brings together parents, health, education and community service agencies into a partnership that concentrates on meeting the needs of young children. The service is available for children from birth to three years and their families.

Aboriginal Family Led Decision Making (AFLDM)

AFLDM provides a culturally respectful process that allows Aboriginal families and Aboriginal communities to have a voice in decision making for their children in relation to child protection matters.

Aboriginal in Home Support

This program is targeted to all Aboriginal families and women with new babies who may also have other small children. The support is available from birth through to three years to those who wish to participate and who live within one of the five catchment areas.

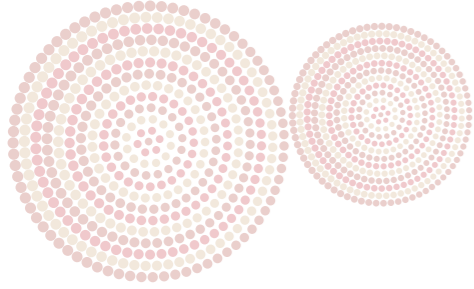
Boorai – Indigenous Supported Playgroup

The Indigenous Supported Playgroup provides opportunities for children and parents to interact through play. It provides opportunities for young children to develop and grow, to learn and practise new skills including social skills in a place where they can have fun playing with other children, their parents and other adult caregivers. It also provides a safe and nurturing environment for Aboriginal children and their families.

Cultural Support Planning

This service provides a Cultural Support Plan for children in the child protection system. The plan is developed by workers, carers and family members in order to allow the child in care to develop and maintain and establish links to country, community and family in a safe and appropriate manner.





Family Connections Worker

This program recognises the need for fathers and other male caregivers to be given positive role models and a voice in the raising of their children. The program aims to strengthen and support parenting capacity while respecting cultural identity.

Integrated Family Services – Indigenous Aboriginal Family Preservation

The Integrated Family Services - Indigenous (IFSI) program works to promote the safety, stability and development of children, young people and their families. IFSI aims to provide a culturally appropriate service to families to assist them in providing a safe, healthy, and nurturing family environment.

Out of Home Based Care – Koori Kare (Foster Care)

Out of Home Based Care provides a safe and stable home for a child who is temporarily unable to live at home. Koori Kare provides a 24-hour telephone response for after-hours emergencies.

Kinship Care

Kinship Care is a safe home provided by extended family or friends for children who are unable to be cared for by their own parents. This ensures family connections and cultural identity are retained.

Phone: 03 5150 0700
Email: cyfsreception@gegac.org.au
www.gegac.org.au

Koori Maternity Service (KMS)

This program provides culturally appropriate maternity services to women and families up to six weeks post birth. The service aims to improve health outcomes for Aboriginal women and their children. A Koori Maternity Service Midwife and Health Worker are available Monday to Friday 9am to 5pm. The program also provides an outreach service to Lake

Tyers and Lakes Entrance and provides a supported referral process to other appropriate services as well as educational support including breast feeding.

Phone: 03 5150 0760
www.gegac.org.au

Lake Tyers Health and Children's Services

Koori Midwife

A midwife provides services to Aboriginal women in the Lake Tyers community. Immunisation services are provided to the Lake Tyers community.

Phone: 03 5155 8500
Email: lthcsrec@lthcs.org.au

Local Government

Scheduled immunisation services at sites across Gippsland

Contact your local government offices for times and locations. A schedule is available on each local government website.

Bass Coast Shire Council
Phone: 1300 226 278
www.basscoast.vic.gov.au

Baw Baw Shire Council
Phone: 03 5024 2519
www.bawbawshire.vic.gov.au

East Gippsland Shire Council
Phone: 1300 555 886
www.eastgippsland.vic.gov.au

Latrobe City Council
Phone: 1300 367 700
www.latrobe.vic.gov.au

South Gippsland Shire Council
Phone: 03 5662 9200 or 5662 9362
Email: immunisation@southgippsland.vic.gov.au
www.southgippsland.vic.gov.au

Wellington Shire Council
Phone: 1300 366 244
www.wellington.vic.gov.au

Ramahyuck District Aboriginal Corporation (RDAC)

Koori Maternity Service

Coordinated through a Victorian Aboriginal Community Controlled Health Organisation (VACCHO), the service provides culturally appropriate maternity services to Aboriginal women and provides services to women with children 0-8 years to improve health outcomes.

Phone: 03 5136 5100
www.ramahyuck.org

Lakes Entrance Aboriginal Health Association (LEAHA)

LEAHA provides maternal and child health services to the community, and can also offer referrals.

18-28 Jemmeson Street
Lakes Entrance 3909
Phone: 03 5155 8465

Moogji Aboriginal Council

Moogji provides maternal and child health services with the support of Orbost Regional Health. Referrals can also be made to support community members and assist with their needs.

52 Stanley Street
Orbost 3888
Phone: 03 5154 2133
Fax: 03 5154 2120
Email: reception@moogji.com.au

Latrobe City Council

Early Years Participation Officer

The Council has an Early Years Participation Officer on its Family Services, Early Childhood Health and Development team. The Council aims to support the community by creating connections to increase participation for Aboriginal and Torres Strait Islander families into early years services, focusing on maternal and child health and preschool.

141 Commercial Road
Morwell 3840
PO Box 264
Phone: 03 5128 5429
Toll free: 1300 367 700
www.latrobe.vic.gov.au





Mental Health

*Brug budgeri wrak (broog bud-gerry wraak)
well head place*

MENTAL HEALTH SERVICES

- Brug budgeri wrak (broog bud-gerry wraak) well head place.

Gippsland and East Gippsland Aboriginal Co-Operative (GEGAC)

GEGAC offers a range of support and programs to help those who are suffering with a mental illness, or those who care for someone with a mental illness. Referrals are also available to ensure fast and appropriate care for local community members.

**37-53 Dalmahoy Street
Bairnsdale 3875
Phone: 03 5150 0700
Email: enquiries@gegac.org.au**

Latrobe Regional Hospital (LRH)

Mental Health Koori Liaison Services

To ensure Aboriginal and Torres Strait Islander communities receive access to appropriate mental health care, Latrobe Regional Hospital offers Aboriginal liaison services to meet the needs of these communities.

**Princes Highway
Traralgon West 3844
Phone: 03 5128 0100
www.lrh.com.au**

headspace

headspace Morwell provides support to young people aged 12-25 years, their families, carers and friends in Baw Baw and Latrobe local government areas. headspace also provides access to GPs, psychologists, counsellors and youth workers.

**Corner of George Street and Hazelwood Road
Morwell 3840
Phone: 03 5136 8300
www.headspace.org.au**

Mental Health Triage (provided by Latrobe Regional Hospital)

Latrobe Regional Hospital has community mental health teams in Traralgon, Sale, Bairnsdale, Warragul, Korumburra, Wonthaggi, Yarram and Orbost caring for children, youth, adults and aged persons. Latrobe Regional Hospital Mental Health Service (LRHMHS) is a public mental health service that provides acute inpatient and community-based assessment, treatment and recovery services for all age groups across Gippsland. Appointments are made according to urgency and clinical requirements. Single point of referral via Mental Health Triage is a 24-hour service.

Phone: 1300 363 322 (24 hours, 7 days)

Lakes Entrance Aboriginal Health Association (LEAHA)

LEAHA has a wide range of support workers and can do referrals to assist community members with their mental health.

**18-26 Jemmeson Street
Lakes Entrance 3909
Phone: 03 5155 8465
Fax: 03 5155 8332**

Lake Tyers Health and Children's Services (LTHCS)

LTHCS has a support team to assist with mental health issues. Please contact LTHCS for more details.

**1 Rules Road
Lake Tyers 3887
Phone: 03 5155 8500
Fax: 03 5156 5791
Email: lthcsrec@lthcs.org.au**

Mind Australia

Wannik Gunyah Program

Wannik Gunyah is a flexible residential psychosocial recovery program for young people who have experienced serious mental health issues.

Wannik Gunyah also offers an outreach service for young people with dual-diagnosis, aged 16 to 24, who have the skills to live in the community with outreach support.

Phone: 03 5176 1800

Personal Helpers and Mentors Program (PHaMs)

Gippsland PHaMs offers an outreach service for people whose ability to manage their daily activities is affected by mental illness and who have the skills to live in the community with outreach support.

Aboriginal Youth Suicide Prevention Program

This project gives priority to young Aboriginal people between the ages of 10 and 25 years who have been identified as having high-risk behaviours.

It enhances the networks and referral pathways in caring for at-risk Aboriginal young people and their families with mainstream health and community services

Phone: 03 5136 5100

General Programs

Mind Australia offers a range of community and residential services in Victoria including information and advice, personalised (outreach) support services, residential services, dual disability residential services, family and carer services, group support services, care coordination services, Mind Recovery College, psychological services and youth services.

**1 Hoyle Street
Morwell 3840
Phone: 1300 286 463
Email: info@mindaustralia.org.au
www.mindaustralia.org.au**

Moogji Aboriginal Council East Gippsland Inc. (Moogji)

Moogji has a wide range of support workers and can do referrals to assist community members with their mental health.

**52 Stanley Street
Orbost 3888
Phone: 03 5154 2133
Fax: 03 5154 2120
Email: reception@moogji.com.au**

UnitingCare Gippsland

UnitingCare Gippsland offers counselling services and other support services are available.

**Bairnsdale:
49 McCulloch Street
Bairnsdale 3875
Phone: 03 5152 9600**

**Sale:
126 Raymond Street
Sale 3850
Phone: 03 5144 7777**

**Leongatha:
3 Church Street
Leongatha 3953
Phone: 03 5662 5150**

Wellways

Wellways offers a unique blend of individual and group programs, delivered by professionals and people with an experience of mental illness and recovery. Supporting families and friends is an important part of what Wellways does. Families have a critical role in supporting and sustaining a person's recovery – and they have their own needs and aspirations.

**31 Mason Street
Warragul 3820
Phone: (03) 5622 4100**

**99 Graham Street
Wonthaggi 3995
Phone: 03 5671 3900
Email: enquiries@wellways.org
www.wellways.org**

Mental Health Advice Line

The Mental Health Advice Line is a telephone service established to provide Victorians with one source for expert advice, information and referral on any mental health issue.

Phone: 1300 280 737

Within Australia

Within Australia delivers psychosocial rehabilitation, recovery services and educative programs to adults with a severe and persistent mental illness, their families and carers.

The programs and services support individuals to self-manage, live well with their symptoms and participate as full citizens in their communities.

'Safe as Houses' Mental Health Support for Secured Tenancies provides a service for people (16 to 64) with mental illness who are homeless or at risk of homelessness. The service is available in East Gippsland, South Gippsland, Bass Coast and Wellington shires. Workers are co-located at GEGAC and Ramahyuck.

Orbost, Sale, Bairnsdale, Leongatha
Phone: 1300 737 412
www.withinaustralia.org.au

Aboriginal Psychiatric Disability Rehabilitation Support Service (PDRSS)

This service aims to improve access for Aboriginal people to mainstream mental health services. It also recognises the central role of the family and the need for an integrated approach to Aboriginal mental health.

304-306 York Street
Sale 3850
Phone: 03 5143 0110

Suicide Helpline Victoria (1300 651 251)

Free professional, anonymous support, 24 hours a day, seven days a week across Victoria.

Free call: 1300 651 251
www.suiceline.org.au

Lifeline Gippsland (13 11 14)

Lifeline Gippsland is a 24-hour crisis support line that provides people with support for a range of issues including depression and other mental illnesses, substance abuse, domestic violence and more. The trained volunteer counsellors can also refer people who are a suicide risk to the Lifeline suicide prevention program.

Morwell office: 03 5136 3500
www.lfg.org.au

Kids Help Line (1800 55 1800)

Kids Helpline is Australia's only national 24/7 telephone and online counselling and support service for young people aged between 5 and 25 years.

Free call: 1800 55 1800
www.kidshelpline.com.au

Beyondblue (1300 22 4636)

Beyondblue (anxiety, depression and suicide) provides information, resources and support to help everyone in Australia to achieve their best possible mental health, whatever their age and wherever they live.

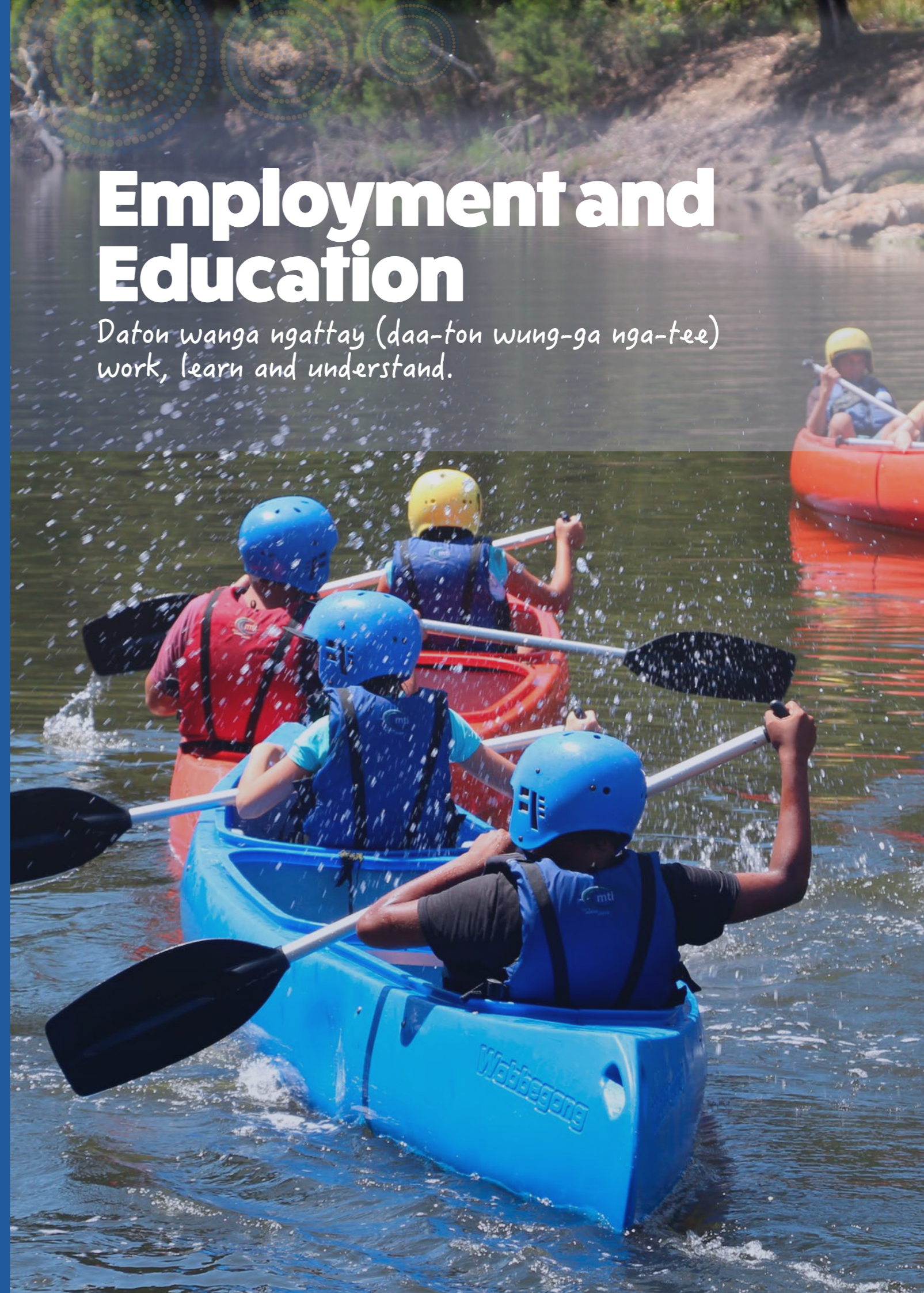
Beyondblue works to equip Aboriginal and Torres Strait Islander people with the knowledge and skills to maintain their own good mental health and wellbeing, and to recognise symptoms in people close to them in order to prevent the development of mental illness.

Phone: 1300 22 4636
www.beyondblue.org.au/for-me/aboriginal-and-torres-strait-islander-people

If you, or someone you know, is at immediate risk of harm please contact emergency services on 000.

Employment and Education

*Daton wanga ngattay (daa-ton wung-ga nga-tee)
work, learn and understand.*



EDUCATION SERVICES

Australian Indigenous Health Info Net

This service provides online information about courses and training opportunities for Aboriginal people.

www.healthinfonet.ecu.edu.au

Moogji Aboriginal Council East Gippsland Inc.

Moogji offers a youth development worker. Please contact Moogji if you wish to become involved.

Phone: 03 5154 2133

Email: reception@moogji.com.au

Ramahyuck District Aboriginal Corporation

Ramahyuck offers cultural competency training programs. Ramahyuck is a registered training organisation.

Phone: 03 5143 1644

Department of Education and Early Childhood Development (DEECD)

Koorie Engagement Support Officers (KESO)

Koorie Engagement Support Officers are responsible for the implementation of the Wannik Education Strategy. KESOs are responsible for facilitating and managing the delivery of programs for Koorie children and young people through early childhood to school completion. They work with families to support a child's access to and participation in early childhood services and school.

DEECD funding to Kindergartens

DEECD provides a full-fee subsidy for Aboriginal children to ensure they have access to a funded kindergarten program planned and delivered by a qualified early childhood teacher in the year before they attend school.

Early Start Kindergarten (Aboriginal and Torres Strait Islander Children)

Three-year-old kindergarten provides Aboriginal and Torres Strait Islander children with an opportunity to access up to 10 hours a week of a funded early childhood program that is planned and delivered by a qualified early childhood teacher.

Djillay Lidj Aboriginal Best Start

This program explores ways of bringing together parents, Elders, health, education and community services and local government to better meet the needs of young Aboriginal children.

Corner of Kirk and Haigh streets

PO Box 381

Moe 3825

Phone: 03 5127 0400

www.gippsland.vic.edu.au

Gippsland & East Gippsland Aboriginal Co-Operative (GEGAC)

Dala Yooro Kindergarten

GEGAC provides three and four-year-old kindergarten services for both Aboriginal and non-Aboriginal children.

37-53 Dalmahoy Street

Bairnsdale 3875

Phone: 03 5152 0810

UnitingCare Gippsland

Dala Lidj Woolum Bellum Pre School

Four-year-olds: Monday and Wednesday, 9am to 2.30pm.

Three-year-olds: Tuesday and Thursday 9am to 2.30pm.

There is bus pick-up and drop-off in Moe, Morwell, Traralgon and Churchill.

3 Harold Street

Morwell 3840

Phone: 03 5135 3795

www.ucgipps.org.au

Koorie Pre-School Advisor

The Koorie Pre-School Advisor supports several kindergartens to ensure inclusion and access for Aboriginal children in Wellington.

Koorie Pre-school Assistants (KPSAs)

KPSAs work in kindergartens with teachers, families and children to ensure that kindergarten programs are delivered in a responsive and culturally respectful manner.

126 Raymond Street

Sale 3850

Phone: 03 5144 7777

www.ucgipps.au

Community College Gippsland

Community College Gippsland (CCG) has a 40-year history of community-based adult and vocational education and training in Gippsland and south-east Melbourne.

It is a not-for-profit registered training organisation delivering accredited courses from certificate I through to diploma across a wide range of curriculum areas. The training focus is on real-life learning, giving people an opportunity to develop practical, industry-relevant skills and confidence that lead to real outcomes. The college offers small class sizes, a supportive environment, flexible workplace training and experienced trainers and teachers who care. It operates campuses at Warragul, Pakenham and Leongatha, and offers more than 80 nationally accredited programs across diverse curriculum areas.

Warragul / Leongatha

Phone: 03 5622 6000

www.ccg.asn.au

Federation Training

With nine campuses from Chadstone in Melbourne's outer east across the state to Lakes Entrance, Federation Training offers a diverse range of programs and specially designed learning environments, providing students with the opportunity to get hands-on and develop real skills and experience in the industry of their choice. Established in 2014 following the amalgamation of Advance TAFE and GippsTAFE, Federation Training provides unprecedented opportunities for local students and an exciting learning environment for those seeking a regional educational experience. Federation Training has a variety of courses from pre-apprenticeships, apprenticeships and traineeships, to certificates, diplomas and advanced diplomas. You can choose to study courses in business, health, general education or trades. There's plenty to choose from! Students can also study a Federation University degree at Federation Training, with flexible pathway options that take you from diploma to bachelor degree in just 2-3 years.

Sites in:

Bairnsdale, Lakes Entrance, Leongatha, Morwell, Sale, Traralgon, Warragul, Yallourn

Phone: 1300 133 717

www.federationtraining.edu.au

EMPLOYMENT SERVICES

Human Services - Indigenous Australians

For help and support with issues regarding Centrelink.

Phone: 1300 136 380
www.humanservices.gov.au

Australian Indigenous Health Info Net

This website provides online information about Aboriginal employment opportunities

www.healthinfonet.ecu.edu.au

Indigenous Employment Assistance

If you are an Indigenous Australian looking for work, there are several programs that can help you.

www.employment.gov.au

Latrobe City Council

Indigenous Employment Program

This program provides pre-employment training and mentoring that leads to sustainable employment for members of the Aboriginal community.

141 Commercial Road
Morwell 3840
Phone: 1300 367 700
www.latrobe.vic.gov.au

Workways Australia Ltd

Job Services Australia (JSA)

Workways offers a range of Indigenous services to the community. It aims to connect Indigenous Australians who are engaged with their community with employers to achieve meaningful employment outcomes.

Workways' programs provide additional assistance to employers looking to employ Indigenous Australians including mentoring, cultural awareness programs and ongoing career development.

35 Della Torre Road
Moe 3825
Phone: 03 5126 4052
Free call: 1800 631 196
www.workways.com.au

Koori Mail

Established in May 1991, the Koori Mail is a fortnightly national newspaper reporting on the issues that matter to Aboriginal and Torres Strait Islander people. It gives Indigenous Australians a voice missing in the mainstream media. The Koori Mail has an employment section with various opportunities for community members.

www.koorimail.com

Centrelink

Centrelink provides Indigenous-specific resources and programs to assist with social welfare.

Indigenous Programs

The Centrelink Indigenous Cadetship Program provides assistance to students to complete study at an approved tertiary institution.

The Indigenous Apprenticeships Program informs Aboriginal and Torres Strait Islander people about payments and programs available from the agencies under the Department of Human Services.

The Indigenous Wage Subsidy provides a wage subsidy for employers who employ Indigenous job seekers.

Indigenous Call Centre

Indigenous Australians living in regional and remote areas can talk about Centrelink payments and services.

Free call: 1800 136 380



Additional Information



TRADITIONAL OWNERS

Gunaikurnai Land and Waters Aboriginal Corporation

The role of the Gunaikurnai Land and Waters Corporation (GLaWAC) is to further the aspirations of the Gunaikurnai Traditional Owners and Native Title Holders through the implementation of the Gunaikurnai native title settlement agreements and the provision of high quality policy advice. It aims to provide strategic leadership by developing and leading key initiatives and to continuously improve the capacity, integrity and independence of the Gunaikurnai. It works under the guidance of the Board of Directors and Elders Council to represent all Gunaikurnai people in native title,

cultural heritage, land, water and natural resource management and related employment aspirations and issues.

**197 Macleod Street
Bairnsdale 3875
Phone: 03 5152 5100
www.glawac.com.au**

Boon Wurrung Foundation

The Boon Wurrung Foundation represents the traditional people and custodians of the lands from the Werribee River to Wilson Promontory and we are proud members of the Kulin People – the Boonwurrung and Woiwurrung.

**208 Bank Street
South Melbourne 3205
Phone: 03 9682 9578
www.boonwurrung.org**

ARTS AND CULTURE

*- nail nambur mana (na-il nam-ber man-na)
talking ochre and sap – the lifeblood of trees/
culture.*

Gippsland & East Gippsland Aboriginal Co-Operative (GEGAC)

Krowathunkooloong Keeping Place

The Keeping Place is a museum housing a vast collection of artefacts, art and information about the culture and history of the Aboriginal people of East Gippsland. It provides an opportunity for visitors to learn the history, heritage and culture of Aboriginal people. Personalised tours for groups and individuals are available.

**37-53 Dalmahoy Street
Bairnsdale 3875
Phone: 03 5150 0700
www.gegac.org.au**

East Gippsland Aboriginal Art Corporation

Bataluk Cultural Trail

EGAAC offers a range of artistic programs for the benefit of their member artists.

**222 Nicholson Street
Bairnsdale 3875
Phone: 03 5153 1002
Email: egaac@egaac.org.au
www.batalukculturaltrail.com.au**

Lake Tyers Aboriginal Trust

Bung Yarnda (big water)

Bung Yarnda is the true name of the place

known as Lake Tyers in East Gippsland. Originally the land of the Gunaikurnai peoples, it became home to Indigenous peoples from all over the state who were forcibly removed from their homelands by white men. Many years later, some of these families were forced to leave the mission and 'assimilate' into townships.

The Trust is surrounded by beautiful waterways and coastal bushlands that have been a magnet for tourists since the 1870s. In 1970 the fight to retain their land was rewarded with the handing back of Bung Yarnda to its peoples. A large community still and always will call Bung Yarnda home.

**Lake Tyers Aboriginal Trust:
Rules Road
Lake Tyers 3909
Phone: 03 5156 5475**

East Gippsland Heritage Network (EGHN)

The network works to identify and protect the region's unique heritage through the efforts of its members.

- Buchan Heritage Group
- East Gippsland Family History Group
- East Gippsland History Society
- Gelantipy and District History Society
- Lakes Entrance Family History Resource Centre
- Lakes Entrance Regional History Society
- Mallacoota and District History Society
- Omeo and District Historical Society
- Orbost Historical Society

**PO Box 820
Bairnsdale 3875
www.heritageeastgippsland.com.au**

IDENTITY SERVICES

- Nanma Ngaju (nan-ma ngar-joo) Who Am I

Connecting Home

Connecting Home staff and clients are available for presentations in your school, community organisation or workplace. The insightful presentations will provide a wealth of historical and firsthand information and experience regarding child removal in Victoria and can be tailored to suit your needs.

**14 Gipps Street
Collingwood 3066
Phone: 03 8679 0777
www.stolengenerationsvictoria.org.au**

Ramahyuck District Aboriginal Corporation (Ramahyuck)

Ramahyuck has a stolen generation program and a 'bring them home' project to help reconnect community members with family.

Phone: 03 5143 1644

Link Up Victoria

Link Up Victoria provides assistance to reconnect to your culture and reunite with your mob and your community.

The service supports Aboriginal people who were victims of past government removal policies and practices.

It assists Aboriginal people over the age of 18, who were adopted, placed in foster care, institutionalised or forcibly removed, to trace and be reunited with their families. The service is confidential, sensitive and culturally appropriate.

**273 High Street
Preston 3072
Free call: 1800 687 662 (1800 our mob)
Email: linkup@vacca.org
www.linkupvictoria.org.au**



SPORTING SERVICES

- braba boolarumah dillba (bra-ba bool-a-rum-ah dill-ba) throw, play and toss place.

Budjeri Napan Sports Committee

Latrobe Valley Koorie Sports Committee

Budjeri Napan (Koorie Sports Committee) was established to support a healthy, active and vibrant Koorie community in the Latrobe Valley.

Phone: 03 5174 7308
www.budjerinapan.com

Gippsland & East Gippsland Aboriginal Co-Operative (GEGAC)

Men's Gym Group

This group is available to all men who would like to improve their fitness. Tuesday, 1pm to 3pm.

Women's Gym Group

This group is available to all women who would like to improve their fitness. Wednesday and Friday, 11am to midday.

Women's Swimming Group

This group follows the gym group on Wednesdays from midday to 1pm.

Women's Walking Group

This group operates from Medical. Tuesdays 11am to midday.

Phone: 03 5150 0700
Email: enquiries@gegac.org.au
www.gegac.org.au

Latrobe City Council

The Council provides health and wellbeing activities including: light exercise program; water aerobics; gym program; community meals; and social activities.

141 Commercial Road
Morwell 3840
Phone: 1300 367 700
www.latrobe.vic.gov.au

Gippsland Lakes Community Health Service (GLCH)

GLCH's family swim program is held at the local YMCA. The program is open to the Lakes Entrance and Lake Tyers Aboriginal community and provides a social activity for the whole family as well as promoting safe play in the water. Transport is available from Lake Tyers. Children must be accompanied by an adult.

Various days during school holidays, 12.30pm to 3pm.

Koori Bubs Swim Program

The Koori Bubs swim program is for Aboriginal children aged 0-5 years from Lakes Entrance and Lake Tyers communities and aims to promote water safety. A shared lunch and transport is provided.

Mondays during school term, 11.30am to 2pm.

Physically Active Kids Program

The Physically Active Kids program focuses on children having fun while developing good physical activity patterns in a safe and friendly environment. The weekly sessions are led by qualified staff, with parents and carers encouraged to participate with their children. Parents and carers are provided with education and support that may be included in play at home or in the child care facility.

18-26 Jemmeson Street
Lakes Entrance 3909
Phone: 03 5155 8300
Email: glch@glch.org.au
www.glch.org.au

GippSport

GippSport is a regional sports assembly that supports the development of the sport and recreation sector and encourages people of all ages and abilities to be active and healthy through participation in sports. GippSport works closely with a range of community groups and organisations to provide opportunities to be active and establish new initiatives.

Phone: 03 5135 8335 (Newborough)
Phone: 03 5142 3193 (Sale)
Phone: 03 5674 6004 (Inverloch)
Phone: 03 5152 6559 (Bairnsdale)
www.gippsport.com.au

Deadly Sport Gippsland

Deadly Sport Gippsland encourages active and healthy lifestyles through promoting health messages, sporting roles models, community activities and sporting events using social marketing campaigns. Assistance and training can be provided for organisations using social media to reach Aboriginal communities. The team can also assist with event promotion and recording events through photos and video production.

Deadly Sport Gippsland also offers small grants for sporting events, representative sports teams and small sports equipment.

Deadly Sport Gippsland is managed by GippSport and funded through the Department of Health and Human Services.

Phone: 03 5135 8335
www.facebook.com/deadlysport
www.deadlysport.com.au

ABORIGINAL LEGAL AND JUSTICE SERVICES

Doora djunga wrak (doo-ra jung-gah wraak) look out for law, police place

Aboriginal Family Violence Prevention and Legal Service (FVPLS) Victoria

The FVPLS provides counselling and legal support to victims of sexual assault and works with families affected by violence.

**27 Pyke Street
Bairnsdale 3875
Phone: 03 5153 2322
Free call: 1800 105 303
www.fvpls.org**

Anglicare Gippsland

Koorie Youth Justice Program

Anglicare Gippsland provides support and programs for young people aged 10-20 years who are on Youth Justice Orders and/or are high-risk adolescents.

**162 Commercial Road
Morwell 3840
Phone: 03 5135 9555
www.anglicarevic.org.au**

Department of Justice

Regional Aboriginal Justice Advisory Committee (RAJAC)

The RAJAC advocates for and promotes improved justice outcomes and Koori justice initiatives to both Koori communities and government agencies.

It monitors Koori contact with the justice system and develops and implements regional justice plans that address Koori over-representation.

It uses partnerships to promote and participate in forums and initiatives to address Koori disadvantage.

Local Aboriginal Justice Advisory Committee (LAJAC)

The LAJAC provides a link between the Regional Aboriginal Justice Advisory Committee (RAJAC) and the local community, feeds information to RAJAC and implements RAJAC strategies locally.

**14 Hazelwood Road
Morwell 3840
Phone: 03 5131 5000
www.justice.vic.gov.au**

Victorian Aboriginal Legal Service (VALS)

VALS plays an important role in providing referrals, advice/information, duty work or case work assistance to Aboriginal and Torres Strait Islander peoples in Victoria. Solicitors at VALS specialise in one of three areas of law, being criminal law, family law and civil law.

**Morwell:
16 George Street
Morwell 3825
Free call: 1800 064 865**

**Bairnsdale:
289 Main Street
Bairnsdale 3875
Phone: 03 5133 9853
Free call: 1800 064 865
www.vals.org.au**

Gippsland Community Legal Service (GCLS)

The GCLS provides accessible legal services to the Gippsland community with a particular focus on disadvantaged groups and those with special needs. It offers free legal advice and referral to all members of the public who live, work or study in the Gippsland region. It operates an "open door" policy.

**16 Commerical Road
Morwell 3840
Phone: 03 5136 9020
Free call: 1800 004 402
Email: gcls@anglicare.org.au
www.gcls.org.au**

Gippsland & East Gippsland Aboriginal Co-Operative

Koorie Offender Support and Mentoring

Support programs and mentoring for adult offenders over 18 years old on Community Based Court Dispositions.

**37-53 Dalmahoy Street
Bairnsdale 3875
Phone: 03 5150 0700
Email: enquiries@gegac.org.au**

Victoria Police

Aboriginal Community Liaison Program (ACLO)

ACLO provides a communication link between local Aboriginal communities and Victoria Police.

**14 Hazelwood Road
Morwell 3840
Phone: 03 5131 5000
www.police.vic.gov.au**

Consumer Affairs Victoria

Consumer Affairs provides legal advice and assistance on accommodation, renting, estate agents, building, shopping and trading.

**2nd floor, 452 Flinders Street
Melbourne 3000
Phone: 1300 661 511
www.consumer.vic.gov.au**

Koori Court Services

Koori Court

The Koori Court is a division of the Magistrates' Court of Victoria. All offences that can be heard in the Magistrates' Court, except family violence and sexual offences, can be heard in the Koori Court.

In contrast to the mainstream system, the Koori Court provides a less formal atmosphere that allows greater participation by the Aboriginal community in the court process. Koori Court Elders and/or respected persons, a Koori Court Officer, the defendant, and their family can all contribute to the discussions during the court hearing.

www.justice.vic.gov.au

Koori County Court

Koori County Court is a sentencing court that has adapted the process so that it is more culturally appropriate. Offenders must plead guilty to be eligible for the County Court.

Plain language is used and defendants sit at an oval table with the judge, prosecutor, Elders and respected persons. The Elders assist in finding and addressing the cause of the criminal behaviour.

**134 Commercial Road
Morwell 3840
Phone: 03 5116 5222
www.justice.vic.gov.au**

Koori Court Officer Magistrates Court

This officer supports Koori offenders aged 18+ years who have come into contact with the criminal justice system within the Latrobe Valley catchment.

Phone: 03 5116 5213

Koori Court Officer County Court

This officer supports Koori offenders whose matters appear before the County Court within the Latrobe Valley catchment.

**Phone: 03 5116 5212
www.justice.vic.gov.au**



Wulgunggo Ngalu (Which Way Together)

Wulgunggo Ngalu provides a state-wide culturally-appropriate residential diversion program for adult Indigenous males on Community Based Orders (CBO). The program enables residents to achieve the requirements of the CBO while connecting or reconnecting to their culture.

The program also provides planning for return to community.

**Moolianga Road
Won Wron
Phone: 03 5188 0000
www.justice.vic.gov.au**

TRANSPORT SERVICES

- quarraail kutbun gree wrak- (qua-rail koot- boon gree wraak) biggest canoe carrying things.

Latrobe Community Health Service

Dental Transport

Transport for Aboriginal school students to attend the Dental Service.

**81-85 Buckley Street
Morwell 3840
Free call: 1800 242 696**

Ramahyuck District Aboriginal Corporation (RDAC)

Transport is provided to attend Ramahyuck medical appointments and to specialist and other local appointments.

**Phone: 03 5143 1644
www.ramahyuck.org**

Dental Transport

RDAC provides transport for Aboriginal clients to Ramahyuck dental service.

**Head office
117 Foster Street
Sale 3850
Phone: 03 5143 1644**

Gippsland & East Gippsland Aboriginal Co-Operative

Transport provided to attend medical and specialist appointments for eligible clients.

**37-53 Dalmahoy Street
Bairnsdale 3875
Phone: 03 5150 0700
Email: enquiries@gegac.org.au**

Lakes Entrance Aboriginal Health

Association (LEAHA)

The medical transport program provides transport to medical appointments for eligible Lakes Entrance Aboriginal community members to Lakes Entrance, Bairnsdale, Sale, Traralgon and Melbourne, Monday to Thursday.

**18-26 Jemmeson Street
Lakes Entrance 3909
Phone: 03 5155 8465
Email: contact@leaha.org.au**

Victorian Patient Transport Assistance Scheme (VPTAS)

VPTAS subsidises medical travel and accommodation costs incurred by rural Victorians and, if appropriate, their escorts, who have no option but to travel a long distance to receive approved medical specialist service.

Forms can be collected and returned to DHS offices in Gippsland.

**9-11 Hazelwood Road
Morwell 3840
Phone: 1300 737 073
www.dhs.vic.gov.au**

ADDITIONAL SUPPORT & COMMUNITY INFORMATION

Funeral service information

All ACHHOs have their individual policies around funeral assistance. If you are in need please contact your local ACCHO and they will assess your individual case accordingly.

Creative Spirits - Aboriginal Culture

Learn about contemporary Aboriginal culture in Australia without agenda.

www.creativespirits.info

Koori Mail

Established in May 1991, the Koori Mail is a fortnightly national newspaper reporting on the issues that matter to Aboriginal and Torres Strait Islander people. We give Indigenous Australians a voice missing in the mainstream media. The Koori Mail is and has always been 100% Aboriginal owned. We're a proprietary limited company based in Lismore, northern NSW. Every cent of our profits goes to Indigenous Australians, in the form of dividends for our owner organisations, scholarships for Aboriginal and/or Torres Strait Islander students, and sponsorship of Indigenous community events. The Koori Mail has about a dozen staff, several general and sports columnists, and a network of correspondents and contributors from throughout the country.

Koori Mail
PO Box 117
Lismore NSW 2480
Phone: 02 6622 2666
www.koorimail.com

NITV

National Indigenous Television (NITV) is a channel made by, for and about Aboriginal and Torres Strait Islander peoples. Through us, you will discover a channel for all Australians.

www.sbs.com.au/nitv

phn
GIPPSLAND

An Australian Government Initiative